

OPEN OFFICE

188.00 m²

1372

B.06.011
MALE WC
5.20 m²

B.06.009
KITCHENET
4.00 m²

Profile system

- Thermally insulated sliding system
- Opening to the left and/or right as required
- Types of opening: 2 or 3 tracks
- Steel reinforcement possible in the middle joint for high wind loads
- Installation depth: 2 tracks 210 mm, 3 tracks 320 mm
- Narrow face widths:
 - Outer frame 60 mm, completely coverable
 - Bottom track 80 mm, fully recessed
 - Panel frame 4.5 mm, of which 21 mm is visible
 - Center joint 30 mm

Tests

- Air permeability certificated DIN EN 1027:2016-09/DIN EN 12208-2000-06 Class 4
- Driving rain resistance certificated DIN EN 1027:2016-09/DIN EN 12208-2000-06 Class E750
- Wind load certificated DIN EN 1027:2016-09/DIN EN 12208-2000-06 Class C5
- Burglar resistance up to resistance class RC2

Fittings

- All fittings are concealed in the profiles
- Low-maintenance, non-rusting and mishandling-proof fittings
- Catch function when closing the sliding panel
- Can be locked from inside and/or outside

Running assembly

- Ball-bearing stainless steel rollers and stainless steel rails
- 800 kg/panel (maximum panel weight)
- U_w from 0,8 W/m²K depending on size and glazing

Glazing

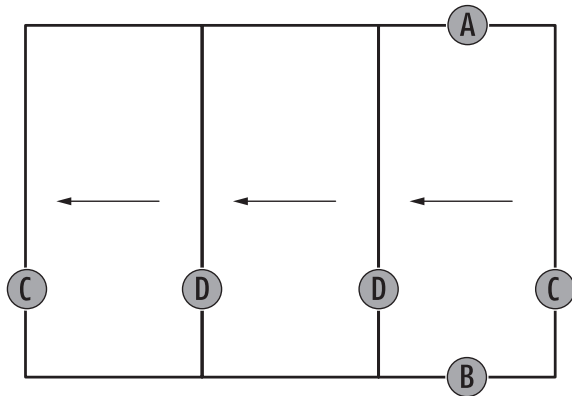
- Glass thicknesses 52 to 54 mm



tested SUNFLEX quality

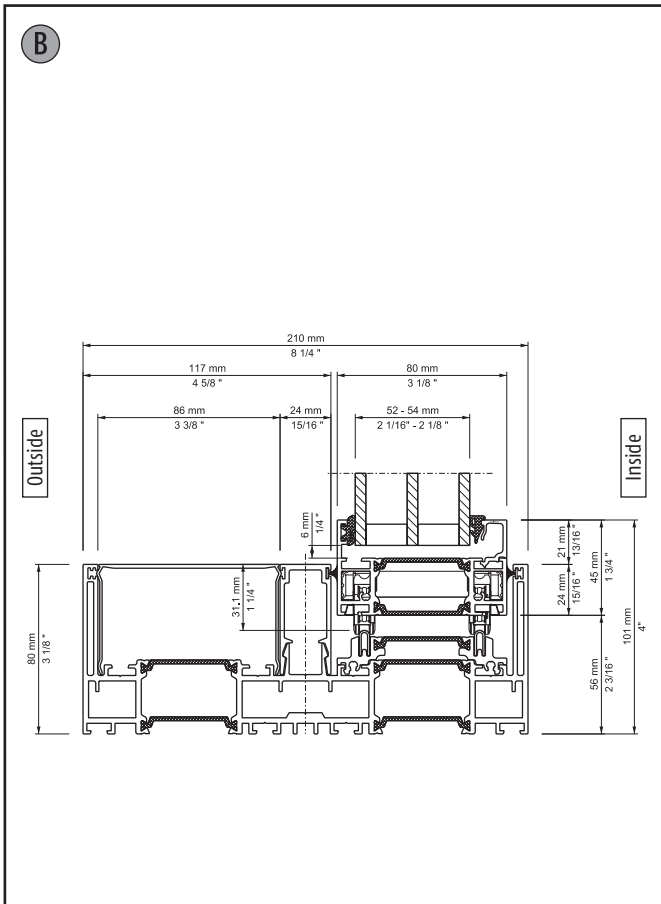


Test Report No. 40-13/23, No. 40-14/23 and No. 45-2/24

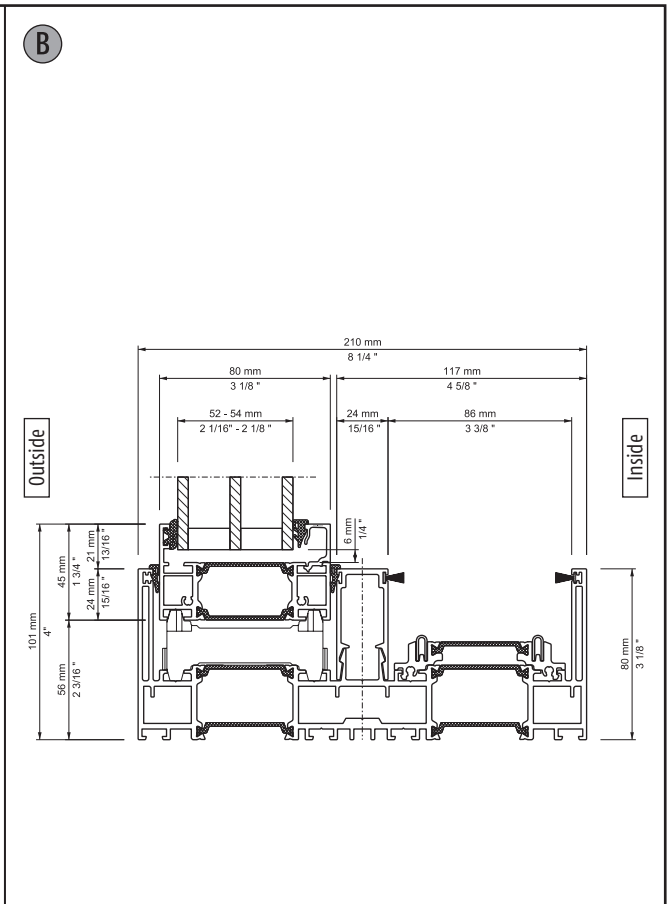


Details at uneven panel partitioning in one direction

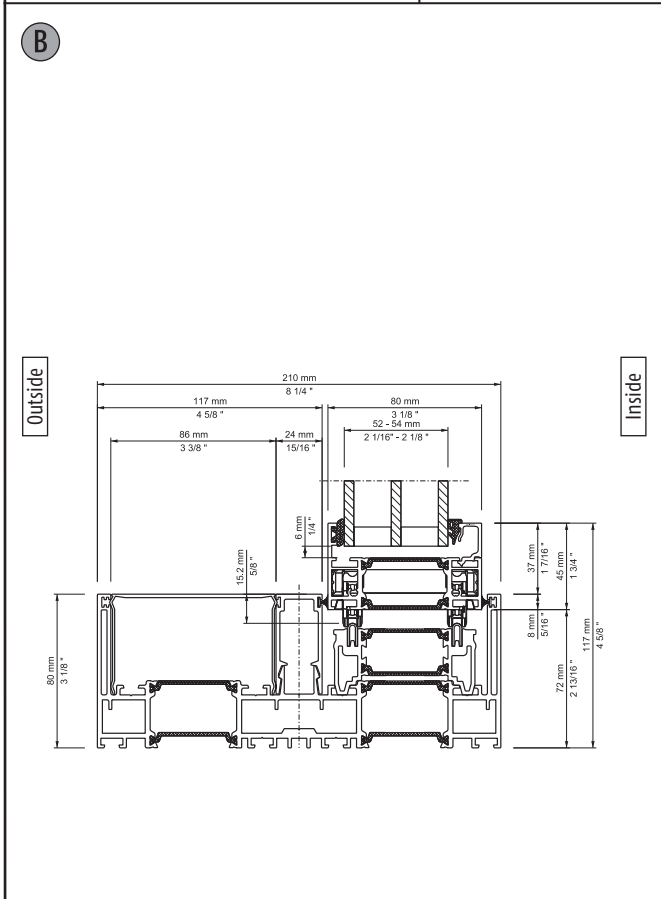
| Ref. | Section | Description | Page |
|------|-----------|--|------|
| B | SF80-001a | Vertical section, bottom track / 2 tracks, low panel depth | 4 |
| B | SF80-001b | Vertical section, bottom track, fix panel / 2 tracks, low panel depth | 4 |
| B | SF80-001c | Vertical section, bottom track / 2 tracks, high panel depth | 4 |
| B | SF80-001d | Vertical section, bottom track, fix panel / 2 tracks | 4 |
| B | SF80-002a | Vertical section, bottom track / 3 tracks, low panel depth | 5 |
| B | SF80-002b | Vertical section, bottom track, fix panel / 3 tracks, low panel depth | 5 |
| B | SF80-002c | Vertical section, bottom track / 3 tracks, high panel depth | 5 |
| B | SF80-002d | Vertical section, bottom track, fix panel / 3 tracks | 5 |
| A | SF80-003a | Vertical section, top track / 2 tracks | 5 |
| A | SF80-003b | Vertical section, top track, fix panel / 2 tracks | 6 |
| A | SF80-003c | Vertical section, top track, coupling / 2 tracks | 6 |
| A | SF80-003d | Vertical section, top track, fix panel and coupling / 2 tracks | 6 |
| A | SF80-004a | Vertical section, top track / 3 tracks | 7 |
| A | SF80-004b | Vertical section, top track, fix panel / 3 tracks | 7 |
| A | SF80-004c | Vertical section, top track, coupling / 3 tracks | 7 |
| A | SF80-004d | Vertical section, top track, fix panel and coupling / 3 tracks | 7 |
| C | SF80-101 | Horizontal section, lateral wall connection operation panel / 2 tracks | 8 |
| C | SF80-102 | Horizontal section, lateral wall connection operation panel / 3 tracks | 8 |
| D | SF80-103a | Horizontal section, panel panel | 8 |
| C | SF80-104 | Horizontal section, lateral wall connection fix panel / 3 tracks | 8 |
| C | SF80-105 | Horizontal section, lateral wall connection fix panel / 2 tracks | 9 |
| -- | SF80-106a | Horizontal section, forend / 2 tracks | 9 |
| -- | SF80-106b | Horizontal section, forend / 3 tracks | 9 |
| -- | SF80-120 | Horizontal section, external corner 2 tracks | 9 |
| -- | SF80-121 | Horizontal section, internal corner 2 tracks | 10 |
| -- | SF80-122 | Horizontal section, external corner 3 tracks | 10 |
| -- | SF80-123 | Horizontal section, internal corner 3 tracks | 10 |



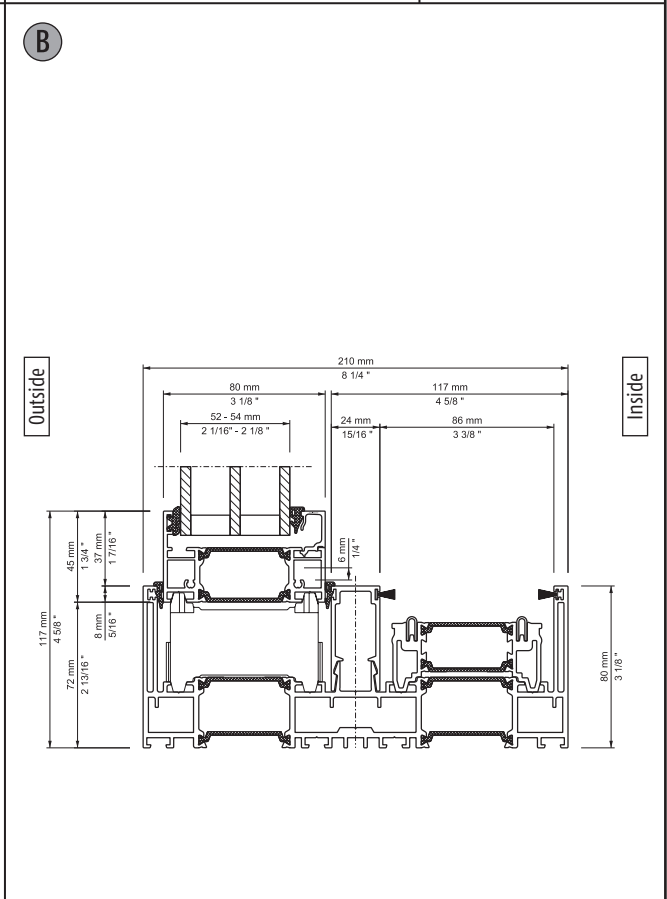
| | |
|---|-----------------------|
| Description: Vertical section, bottom track / 2 tracks, low panel depth | System: SF80 |
| | Detail-No.: SF80-001a |



| | |
|--|-----------------------|
| Description: Vertical section, bottom track, fix panel / 2 tracks, low panel depth | System: SF80 |
| | Detail-No.: SF80-001b |



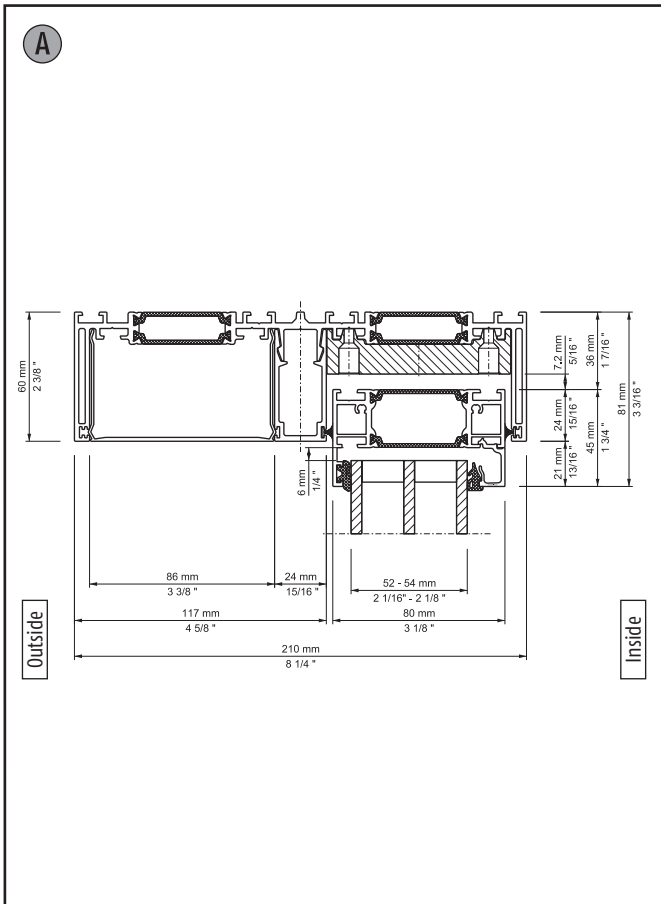
| | |
|--|-----------------------|
| Description: Vertical section, bottom track / 2 tracks, high panel depth | System: SF80 |
| | Detail-No.: SF80-001c |



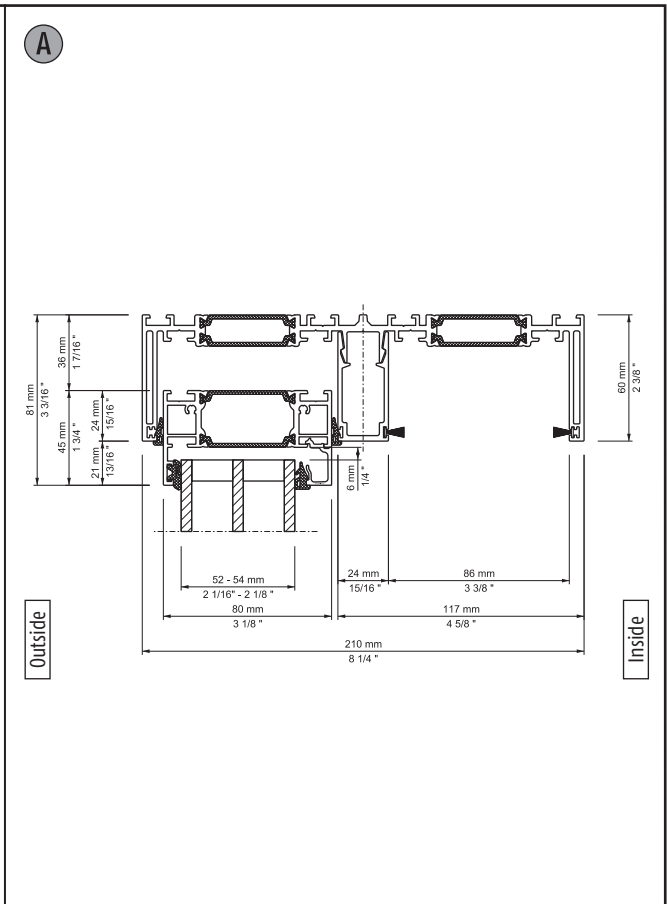
| | |
|---|-----------------------|
| Description: Vertical section, bottom track, fix panel / 2 tracks, high panel depth | System: SF80 |
| | Detail-No.: SF80-001d |

| | |
|--|---|
| <p>B</p> | <p>B</p> |
| <p>Description: Vertical section, bottom track / 3 tracks, low panel depth</p> <p>System: SF80</p> <p>Detail-No.: SF80-002a</p> | <p>Description: Vertical section, bottom track, fix panel / 3 tracks, low panel depth</p> <p>System: SF80</p> <p>Detail-No.: SF80-002b</p> |
| <p>B</p> | <p>B</p> |
| <p>Description: Vertical section, bottom track / 3 tracks, high panel depth</p> <p>System: SF80</p> <p>Detail-No.: SF80-002c</p> | <p>Description: Vertical section, bottom track, fix panel / 2 tracks, high panel depth</p> <p>System: SF80</p> <p>Detail-No.: SF80-002d</p> |

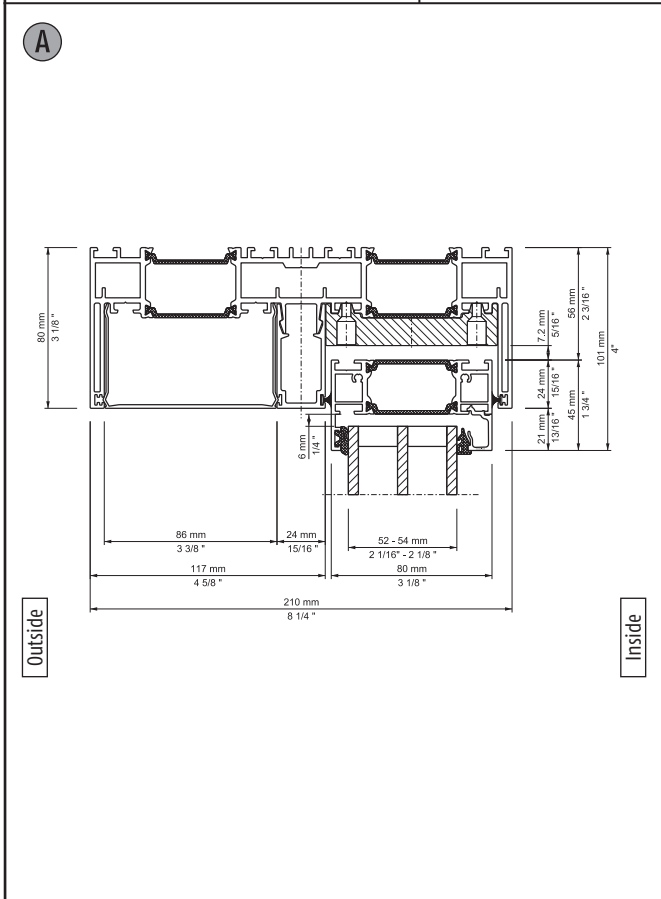
Technical modifications and errors reserved.



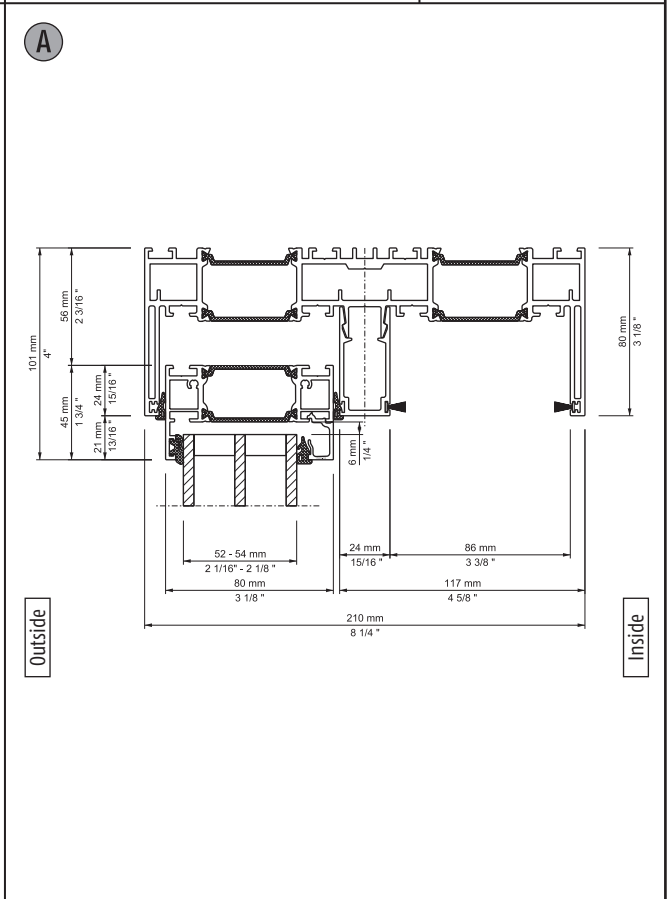
| | |
|---|-----------------------|
| Description: Vertical section, top track / 2 tracks | System: SF80 |
| | Detail-No.: SF80-003a |



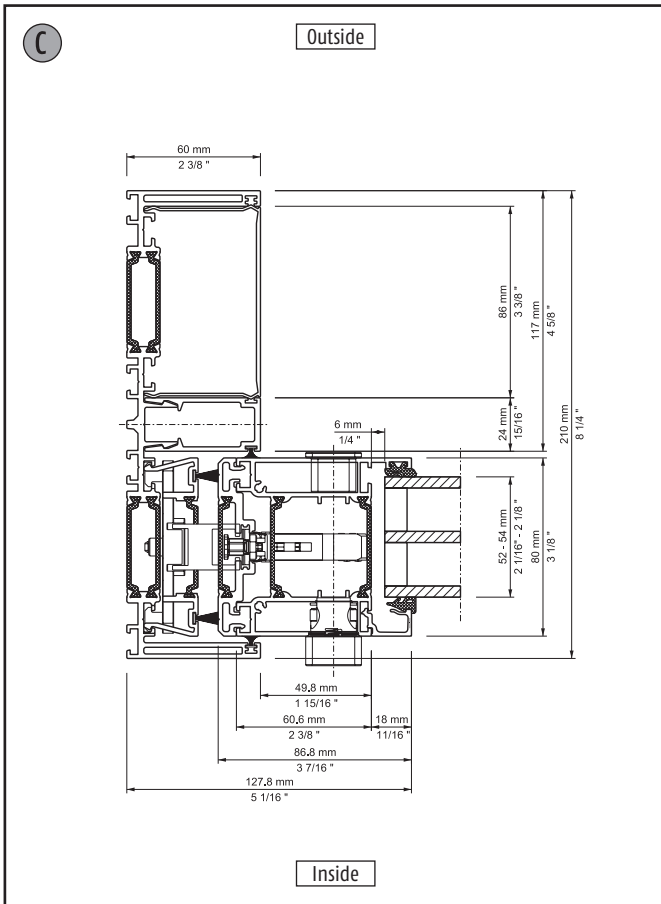
| | |
|--|-----------------------|
| Description: Vertical section, top track, fix panel / 2 tracks | System: SF80 |
| | Detail-No.: SF80-003b |



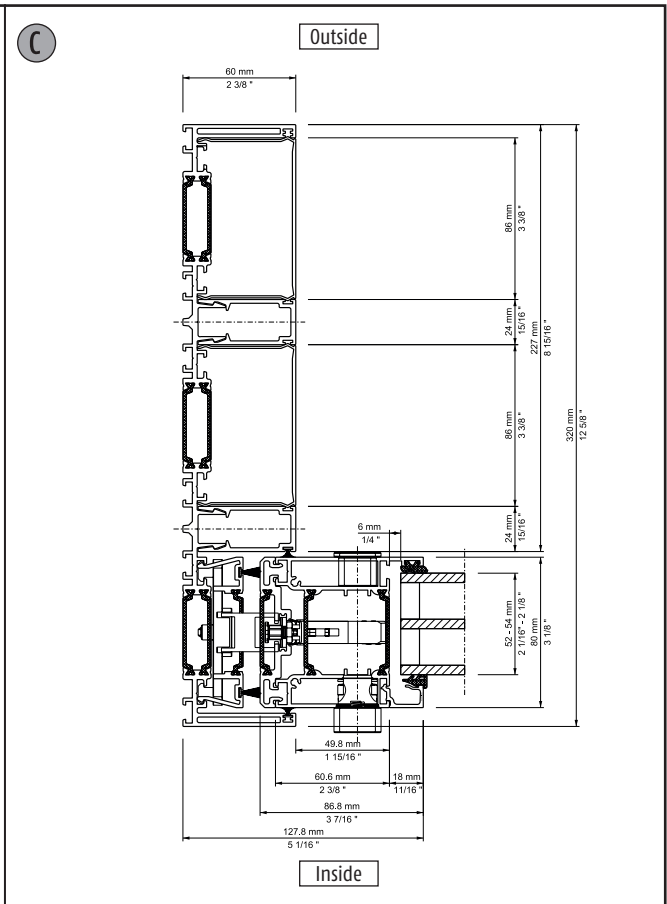
| | |
|---|-----------------------|
| Description: Vertical section, top track, coupling / 2 tracks | System: SF80 |
| | Detail-No.: SF80-003c |



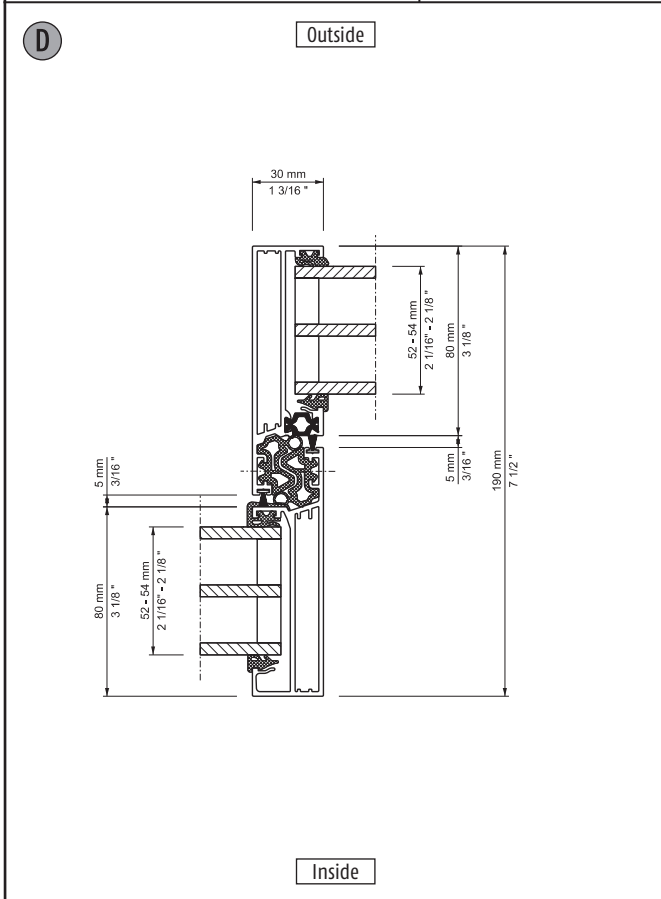
| | |
|--|-----------------------|
| Description: Vertical section, top track, fix panel and coupling / 2 track | System: SF80 |
| | Detail-No.: SF80-003d |



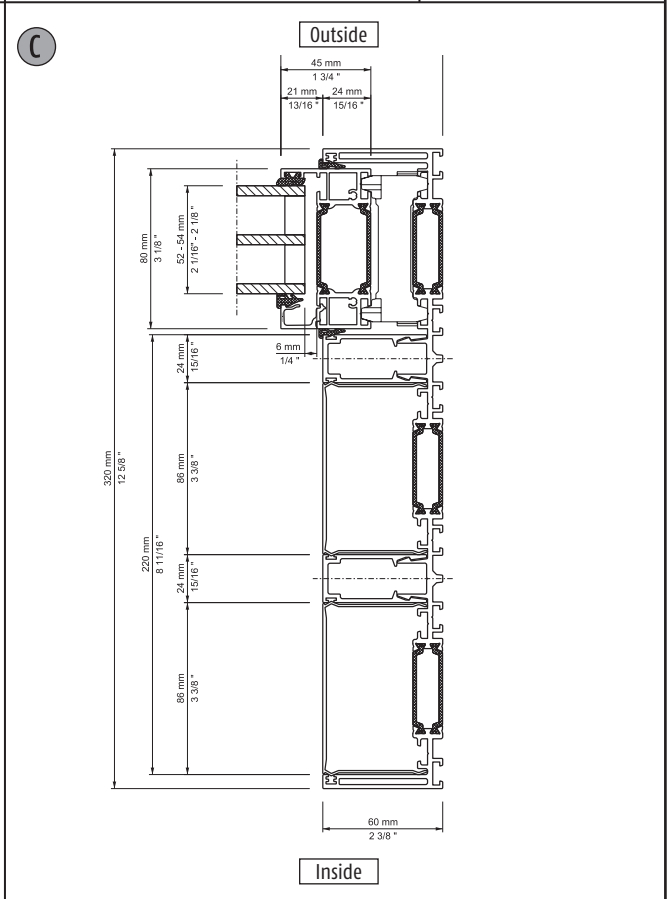
Description: Horizontal section, lateral wall connection operation panel / 2 tracks
 System: SF80
 Detail-No.: SF80-101



Description: Horizontal section, lateral wall connection operation panel / 3 tracks
 System: SF80
 Detail-No.: SF80-102



Description: Horizontal section, panel panel
 System: SF80
 Detail-No.: SF80-103a



Description: Horizontal section, lateral wall connection fix panel / 3 tracks
 System: SF80
 Detail-No.: SF80-104

| | | | |
|--|--|--|---|
| <p style="text-align: center;">Outside</p> <p style="text-align: center;">Inside</p> | <p>Description: Horizontal section, lateral wall connection fix panel / 2 tracks</p> <p>System: SF80</p> <p>Detail-No.: SF80-105</p> | <p style="text-align: center;">Outside</p> <p style="text-align: center;">Inside</p> | <p>Description: Horizontal section, forend / 2 tracks</p> <p>System: SF80</p> <p>Detail-No.: SF80-106a</p> |
| <p style="text-align: center;">Outside</p> <p style="text-align: center;">Inside</p> | <p>Description: Horizontal section, forend / 3 tracks</p> <p>System: SF80</p> <p>Detail-No.: SF80-106b</p> | <p style="text-align: center;">Outside</p> <p style="text-align: center;">Inside</p> | <p>Description: Horizontal section, external corner 2 tracks</p> <p>System: SF80</p> <p>Detail-No.: SF80-106b</p> |

