

SUNFLEX UK 

Technical Manual - SVG20/30/83 Triple Track



| Standard Colours | |
|--|---|
| Frame | RAL 7016 Anthracite Grey in matt finish DB703 Charcoal Grey Metallic in textured finish RAL 9005 Jet Black in matt finish |
| 200 Non-standard RAL colours and marine finish available | |
| Dual colour available but colour on opposite side can be seen when doors are open or closed, please ask for photos of this if required | |
| Bar Handles | Colour matched to door colour or Stainless Steel |
| Recessed Handles | Colour matched to door colour |
| D Handles | Colour matched to door colour |

| Maximums & Minimums* | | | |
|---|--------------------------|---------------------------|---------------------------|
| Minimum Door Panel Width | Maximum Door Panel Width | Minimum Door Panel Height | Maximum Door Panel Height |
| 800mm | 3000mm | 1000mm | 3000mm |
| *Please refer to SVG20 & SVG30 maximum panel sizes based upon site exposure on page 9 | | | |
| Maximum weight per door panel is 250KG | | | |

| Thermal performance | | |
|---|--|-----------------------------|
| Glass thickness Options | 36mm or 36.8mm | |
| Centre Pane | Example of glass | Overall U-value |
| 1.0 W/m ² k Double glazed | 6mm toughened x 24mm Argon x 6mm toughened soft coat coat | from 1.4 W/m ² k |
| 0.7 W/m ² k Double glazed | 6mm toughened x 24mm Argon x 6mm toughened CUIN Ultra | from 1.2 W/m ² k |

| Security | |
|----------------|--|
| Locking | Multipoint locking system with hook lock and cams |
| | Concealed Anti Lift Blocks |
| | Key locking, 6 Pin, Anti Bump, Anti-Snap, Anti-Drill |
| Accreditations | PAS 24:2022 certification* (P1a Security Glass Required) |
| | Secure By Design™* (P1a Security Glass Required) |

| Weather performance* | |
|---|--|
| Water Tightness BS EN 12208 | 300 Pa. (Class 7a) |
| Air Permeability BS EN 12207 | 600 Pa. (Class 3) |
| Wind resistance | 1700 Pa. (Class C4) |
| *Dependant on size and style, please contact Sunflex UK for specific results. | |
| Trickle Vent Options | 4000mm ² or 8000mm ² Airflow in 40mm Add Ons |
| Sill Options (see page 10 for further details) | 190mm x 25mm |
| | 228mm x 25mm |
| Heritage Style (See page 19 for further details) | 30mm Plant on bar |
| | 70mm Midrail |

SVG20 & SVG30 Key Features

Ultra Slim but not a structurally bonded sliding door

Unlike most ultra slim sliding doors other companies supply, the SVG20 & SVG30 doors are not structurally bonded to the glass. If the glass was structurally bonded to the doors replacing or upgrading the glass in the future would mean buying a new door panel as well, or a whole new set of doors if that door is no longer made. Sunflex UK are proud to not sell structurally bonded sliding doors providing its customers with long term peace of mind. For more information, please read our blog -

<https://sunflexuk.co.uk/help-advice/structurally-bonded-glass-know-the-risks-when-choosing-a-sliding-door/>

When the SVG doors are open the door panels stack neatly, flush, in line with each other. Such a neat detail and a contemporary appearance. Most sliding doors from other companies are staggered when open, not as neat or as well designed.

Flush Stacking Panels

Slim From Any Angle sliding door

The SVG20 has a 20mm sight line and the SVG30 has a 30mm sight line. The SVG doors are designed without the need for any external reinforcing profile or a chunky frame that extends away from the glass. The SVG doors are slim from any angle, not just face on. Only 59mm front to back no matter the size of the doors. When choosing a sliding door always check the depth of the interlock, how this will look from an angle, not just the straight on sightline.

Sunflex UK have been manufacturing and supplying sliding doors across the UK for over 20 years. Over this time the SVG doors have had continuous updates and innovations, and you can benefit from the tried and tested finished product. Every Sunflex UK SVG door is made in the Sunflex UK manufacturing plant. Sunflex UK supplies to a hand selected network of distributors across the UK to ensure the best possible service and complete peace of mind.

Complete Peace Of Mind

Advanced Performance Quad Wheel Carriage

Over the past 20 years Sunflex UK have learned that the most crucial part of any sliding door is the wheel carriage the doors run on. This is the engine of the sliding doors and will dictate how smoothly the doors slide and how long the doors will last. When choosing a sliding door compare what the wheel carriage looks like and what the wheels are made of. Other sliding doors have plastic wheels or just a 2 wheel carriage. The Sunflex UK SVG doors have 4 wheels on each running carriage, made of stainless-steel running on a stainless steel track, perfect for smooth sliding and longevity.

The door handle can make or break the look of a sliding door. Not only must these look good they must also be a pleasure to use. The SVG doors have a range of handle styles, either colour matched to the doors or in stainless steel.

Handle Options

Range of opening Styles

The SVG doors have a range of opening styles. Pocket doors providing a 100% clear opening, open corners for a seamless transition between inside and outside, frameless corners for dual aspect views. You can combine the open corners with pocket doors for a real wow factor and the centre piece of your build.

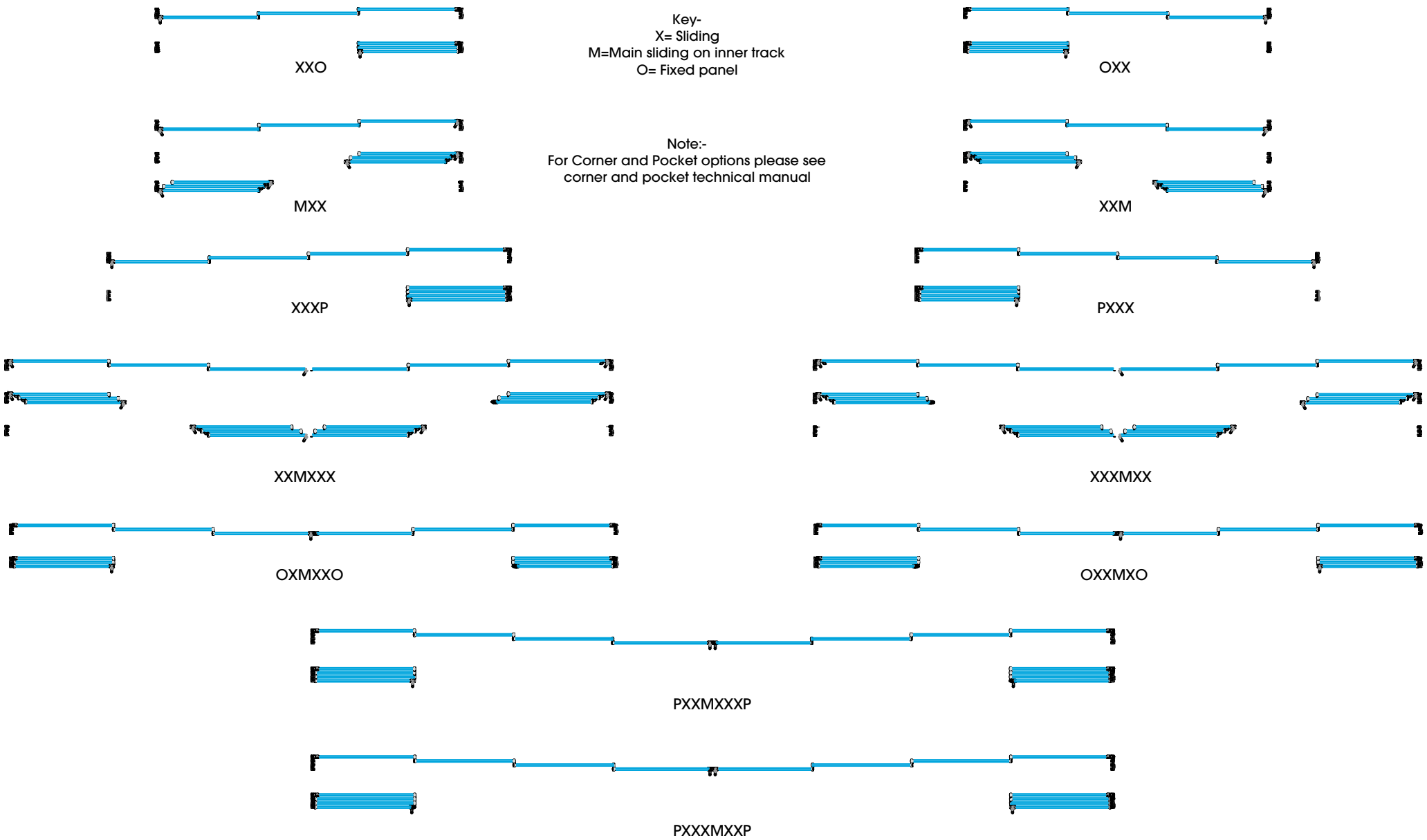
The SVG sliding doors hold the prestigious Secured By Design award, a police security initiative. A continuous 6-point locking system with concealed anti-lift blocks. PAS24 compliant meeting the requirements of building regulations Part Q and a 6-pin anti-bump, anti-snap, anti-drill key cylinder exceeding British insurance requirements of BS3621.

Security

Standard Configurations

Key-
X= Sliding
M=Main sliding on inner track
O= Fixed panel

Note:-
For Corner and Pocket options please see
corner and pocket technical manual



3 Doors, 2 Sliding, 1 Fixed (XOX)



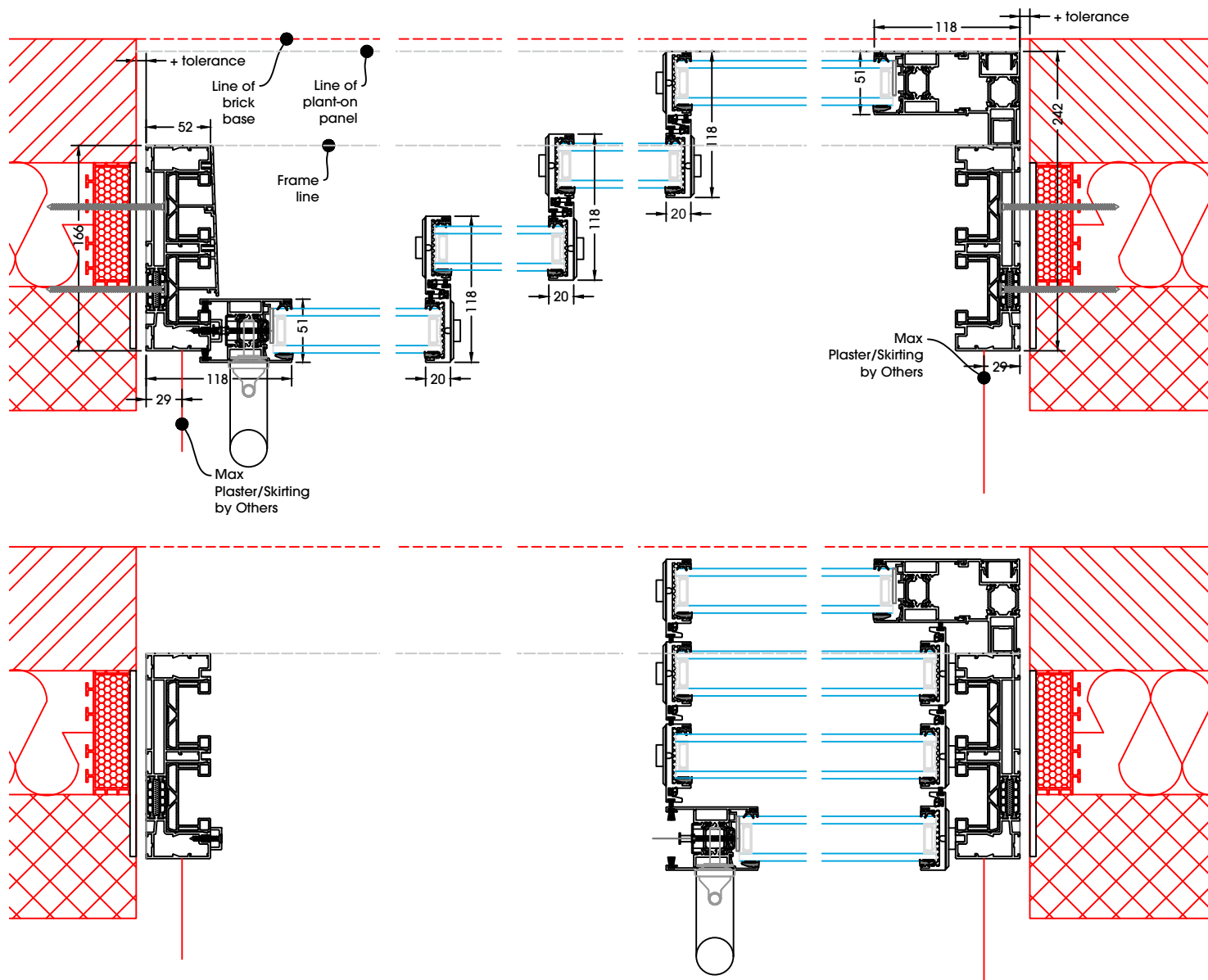
The SVG20 & SVG30 can provide flush stacking panels when open. Such a neat design compared to many other sliding doors that must be staggered when open. To achieve this the protruding handle and lock must be on the inside only, colour matched recessed handle can be on the outside. There should also be a fixed door panel. A fixed door panel also allows the colour matched treadplates to be used on the outside tracks for a neater look.

Flush Stacking Panels When Open (All Panels Sliding)

When all doors slide, flush stacking panels are only possible with a protruding handle and key lock on the inside only of the inner panel and outside only of the external panel. The doors would flush stack to one side only, when the panel on the inner track opens to the opposite side.

Flush Stacking Panels

3 Sliding Doors, 1 Plant-on panel (XXXP)



Flush Stacking Panels When Open

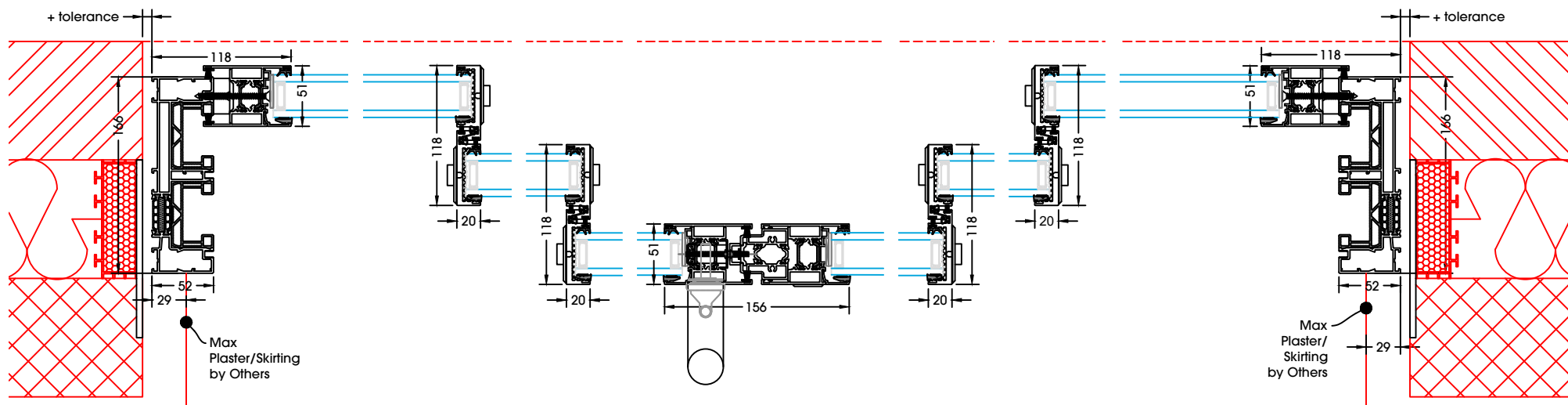
The SVG20 & SVG30 can provide flush stacking panels when open. Such a neat design compared to many other sliding doors that must be staggered when open. To achieve this the protruding handle and lock must be on the inside only, colour matched recessed handle can be on the outside. There should also be a fixed door panel. A fixed door panel also allows the colour matched treadplates to be used on the outside tracks for a neater look.

Flush Stacking Panels When Open (All Panels Sliding)

When all doors slide, flush stacking panels are only possible with a protruding handle and key lock on the inside only of the inner panel and outside only of the external panel. The doors would flush stack to one side only, when the panel on the inner track opens to the opposite side.

Flush Stacking Panels

1 Fixed, 2 Sliding Doors (Main Panel), 2 Sliding Doors, 1 Fixed (OXMXXO)

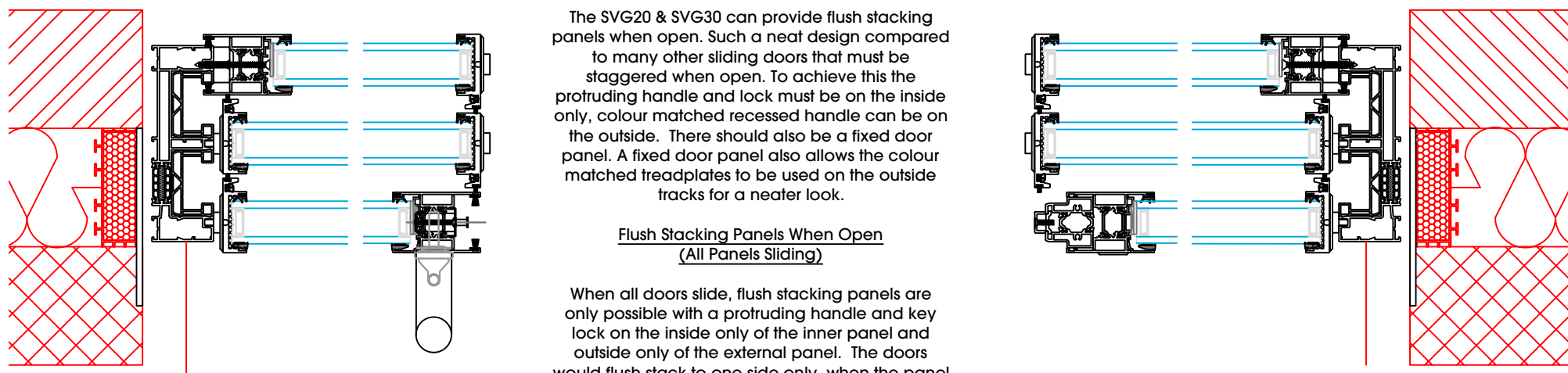


Flush Stacking Panels When Open

The SVG20 & SVG30 can provide flush stacking panels when open. Such a neat design compared to many other sliding doors that must be staggered when open. To achieve this the protruding handle and lock must be on the inside only, colour matched recessed handle can be on the outside. There should also be a fixed door panel. A fixed door panel also allows the colour matched treadplates to be used on the outside tracks for a neater look.

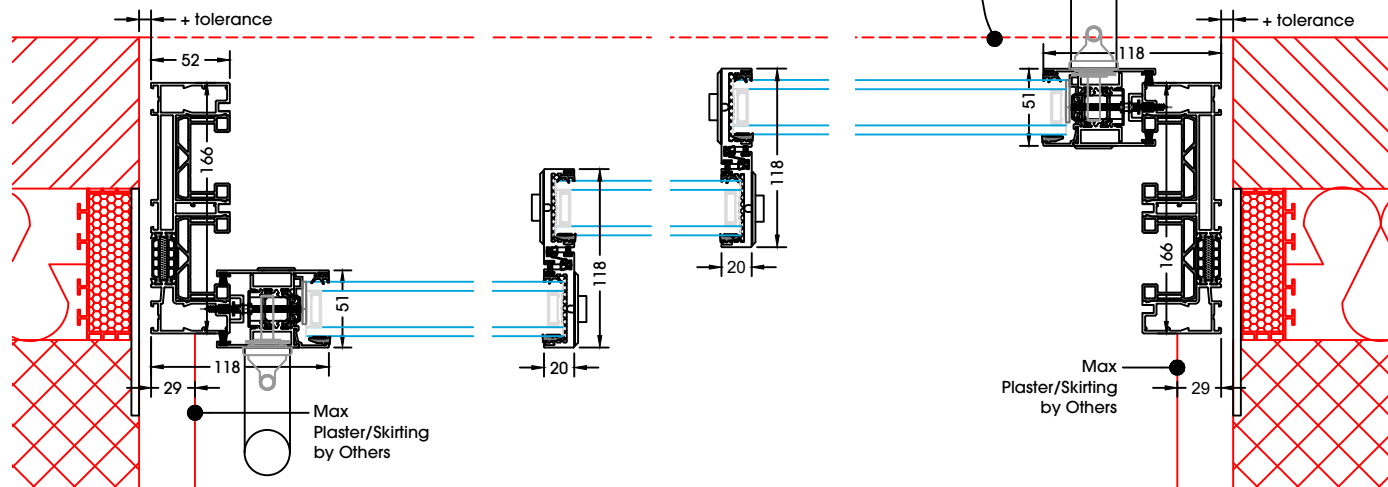
Flush Stacking Panels When Open (All Panels Sliding)

When all doors slide, flush stacking panels are only possible with a protruding handle and key lock on the inside only of the inner panel and outside only of the external panel. The doors would flush stack to one side only, when the panel on the inner track opens to the opposite side.



Flush Stacking Panels - One Side Only

All Sliding Doors, One Main Panel (MXX)

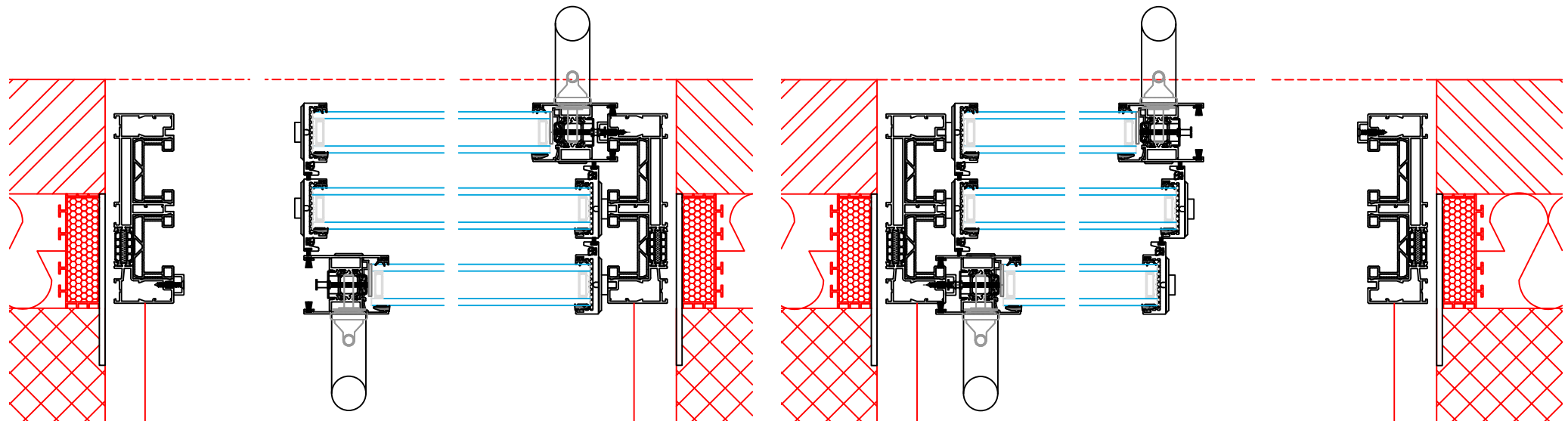


Flush Stacking Panels When Open

The SVG20 & SVG30 can provide flush stacking panels when open. Such a neat design compared to many other sliding doors that must be staggered when open. To achieve this the protruding handle and lock must be on the inside only, colour matched recessed handle can be on the outside. There should also be a fixed door panel. A fixed door panel also allows the colour matched treadplates to be used on the outside tracks for a neater look.

Flush Stacking Panels When Open (All Panels Sliding)

When all doors slide, flush stacking panels are only possible with a protruding handle and key lock on the inside only of the inner panel and outside only of the external panel. The doors would flush stack to one side only, when the panel on the inner track opens to the opposite side.



Maximum Glazing Weight per m² shown below. Max Panel Weight 250kg. please check with your glass supplier for their glass parameters

SVG30 Max Panel Sizes


| 3000 | 55kg | 55kg | 55kg | 55kg | 55kg | 55kg | 50kg | 45kg | 45kg | 40kg | 40kg | | | | | | | | | | |
|------|------|------|------|------|------|------|------|------|------|------|------|------|------|------|------|------|------|------|------|------|------|
| 2900 | 55kg | 55kg | 55kg | 55kg | 55kg | 55kg | 50kg | 50kg | 45kg | 45kg | 40kg | 40kg | | | | | | | | | |
| 2800 | 55kg | 55kg | 55kg | 55kg | 55kg | 55kg | 50kg | 45kg | 45kg | 40kg | 40kg | 40kg | | | | | | | | | |
| 2700 | 55kg | 55kg | 55kg | 55kg | 55kg | 55kg | 50kg | 45kg | 45kg | 45kg | 40kg | 40kg | 40kg | | | | | | | | |
| 2600 | 55kg | 55kg | 55kg | 55kg | 55kg | 55kg | 55kg | 50kg | 50kg | 45kg | 45kg | 40kg | 40kg | | | | | | | | |
| 2500 | 55kg | 55kg | 55kg | 55kg | 55kg | 55kg | 55kg | 50kg | 50kg | 50kg | 45kg | 45kg | 40kg | 40kg | | | | | | | |
| 2400 | 55kg | 55kg | 55kg | 55kg | 55kg | 55kg | 55kg | 50kg | 50kg | 50kg | 50kg | 45kg | 45kg | 40kg | 40kg | | | | | | |
| 2300 | 55kg | 55kg | 55kg | 55kg | 55kg | 55kg | 55kg | 50kg | 50kg | 50kg | 50kg | 50kg | 45kg | 45kg | 45kg | 40kg | 40kg | | | | |
| 2200 | 55kg | 55kg | 55kg | 55kg | 55kg | 55kg | 55kg | 55kg | 50kg | 50kg | 50kg | 50kg | 50kg | 45kg | 45kg | 45kg | 40kg | 40kg | 40kg | 40kg | |
| 2100 | 55kg | 55kg | 55kg | 55kg | 55kg | 55kg | 55kg | 55kg | 55kg | 55kg | 55kg | 55kg | 50kg | 50kg | 50kg | 50kg | 45kg | 40kg | 40kg | 40kg | 40kg |
| 2000 | 55kg | 55kg | 55kg | 55kg | 55kg | 55kg | 55kg | 55kg | 55kg | 55kg | 55kg | 55kg | 55kg | 50kg | 50kg | 50kg | 45kg | 40kg | 40kg | 40kg | 40kg |
| | 1000 | 1100 | 1200 | 1300 | 1400 | 1500 | 1600 | 1700 | 1800 | 1900 | 2000 | 2100 | 2200 | 2300 | 2400 | 2500 | 2600 | 2700 | 2800 | 2900 | 3000 |

Maximum Glazing Weight per m² shown below. Max Panel Weight 250kg. please check with your glass supplier for their glass parameters

SVG20 Max Panel Sizes

| 3000 | 55kg | 55kg | | | | | | | | | | | | | | | | | | | |
|------|------|------|------|------|------|------|------|------|------|------|------|------|------|------|------|------|------|------|------|------|------|
| 2900 | 55kg | 55kg | 55kg | | | | | | | | | | | | | | | | | | |
| 2800 | 55kg | 55kg | 55kg | 55kg | 55kg | | | | | | | | | | | | | | | | |
| 2700 | 55kg | 55kg | 55kg | 55kg | 55kg | 55kg | 55kg | | | | | | | | | | | | | | |
| 2600 | 55kg | 55kg | 55kg | 55kg | 55kg | 55kg | 55kg | 55kg | 50kg | | | | | | | | | | | | |
| 2500 | 55kg | 55kg | 55kg | 55kg | 55kg | 55kg | 55kg | 55kg | 50kg | 50kg | 50kg | 45kg | | | | | | | | | |
| 2400 | 55kg | 55kg | 55kg | 55kg | 55kg | 55kg | 55kg | 55kg | 50kg | 50kg | 50kg | 50kg | 45kg | 45kg | 45kg | | | | | | |
| 2300 | 55kg | 55kg | 55kg | 55kg | 55kg | 55kg | 55kg | 55kg | 50kg | 50kg | 50kg | 50kg | 50kg | 45kg | 45kg | 40kg | | | | | |
| 2200 | 55kg | 55kg | 55kg | 55kg | 55kg | 55kg | 55kg | 55kg | 55kg | 50kg | 55kg | 50kg | 50kg | 45kg | 45kg | 45kg | 40kg | 40kg | 40kg | 40kg | |
| 2100 | 55kg | 55kg | 55kg | 55kg | 55kg | 55kg | 55kg | 55kg | 55kg | 55kg | 55kg | 55kg | 50kg | 50kg | 50kg | 45kg | 45kg | 40kg | 40kg | 40kg | 40kg |
| 2000 | 55kg | 55kg | 55kg | 55kg | 55kg | 55kg | 55kg | 55kg | 55kg | 55kg | 55kg | 55kg | 55kg | 50kg | 50kg | 50kg | 45kg | 40kg | 40kg | 40kg | 40kg |
| | 1000 | 1100 | 1200 | 1300 | 1400 | 1500 | 1600 | 1700 | 1800 | 1900 | 2000 | 2100 | 2200 | 2300 | 2400 | 2500 | 2600 | 2700 | 2800 | 2900 | 3000 |

 Suitable for wind pressure up to 750 Pascals.

 Suitable for wind pressure up to 1200 Pascals.

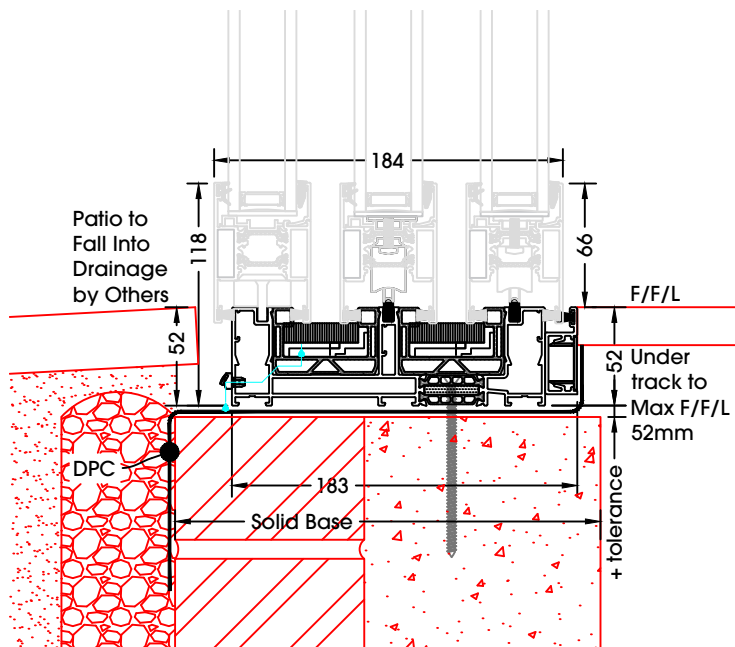
 Suitable for wind pressure up to 1700 Pascals.

(Contact Sunflex UK with post code and building height for an indication of expected wind pressure or check with structural engineer / architect etc.)

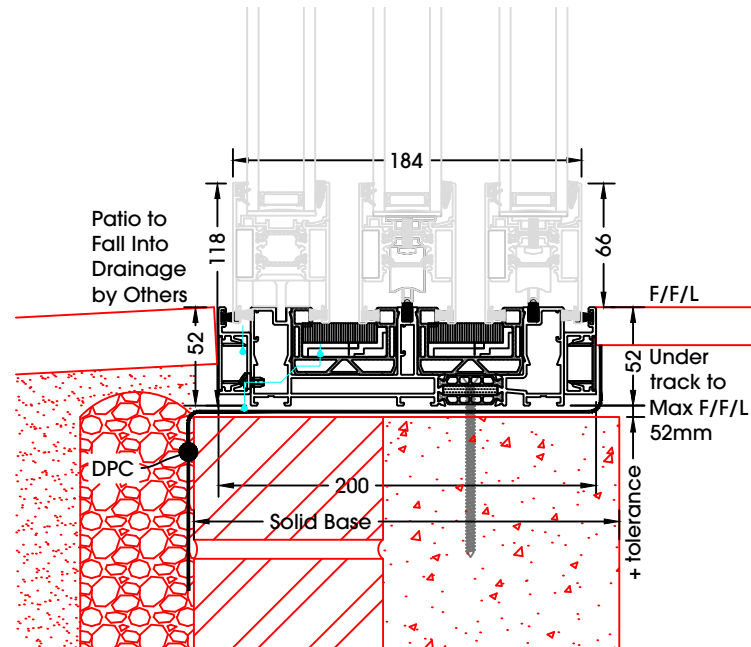
Minimum of 6mm thick glass required.

Any heights over 2500mm should be using 8mm glass units to prevent glass bowing.

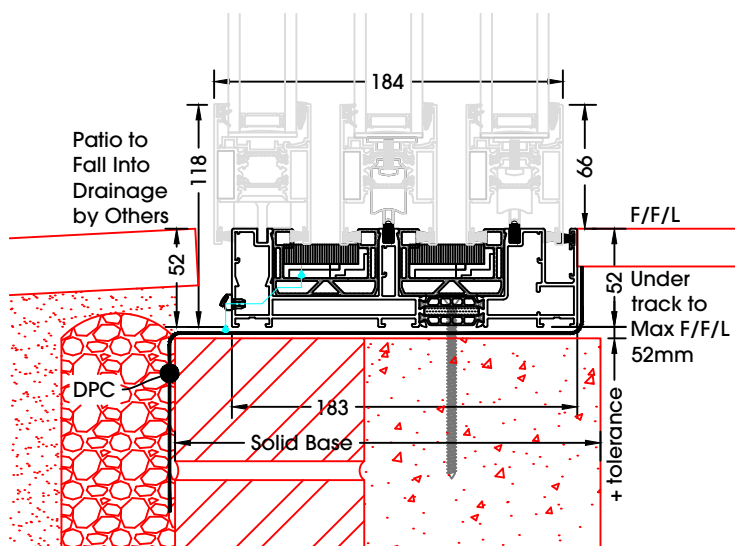
Spacer bar to project no more than 12mm into unit



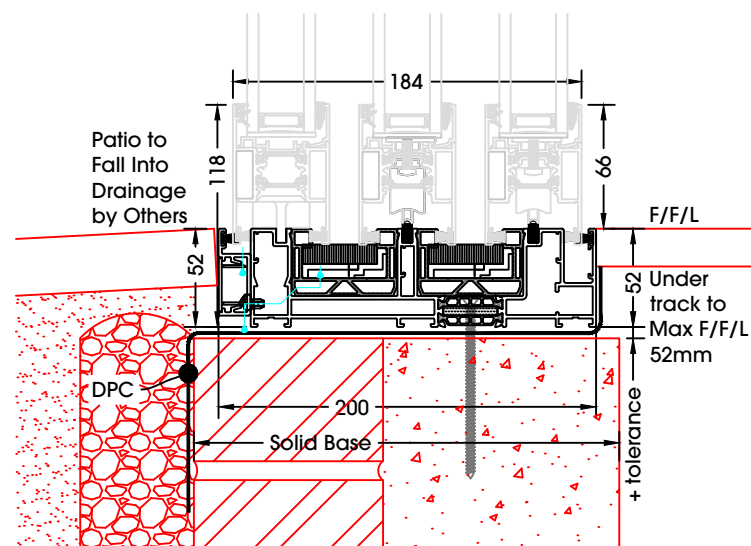
Triple track with flush floor detail inside



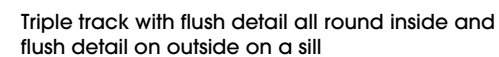
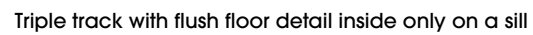
Triple track with flush floor detail both sides

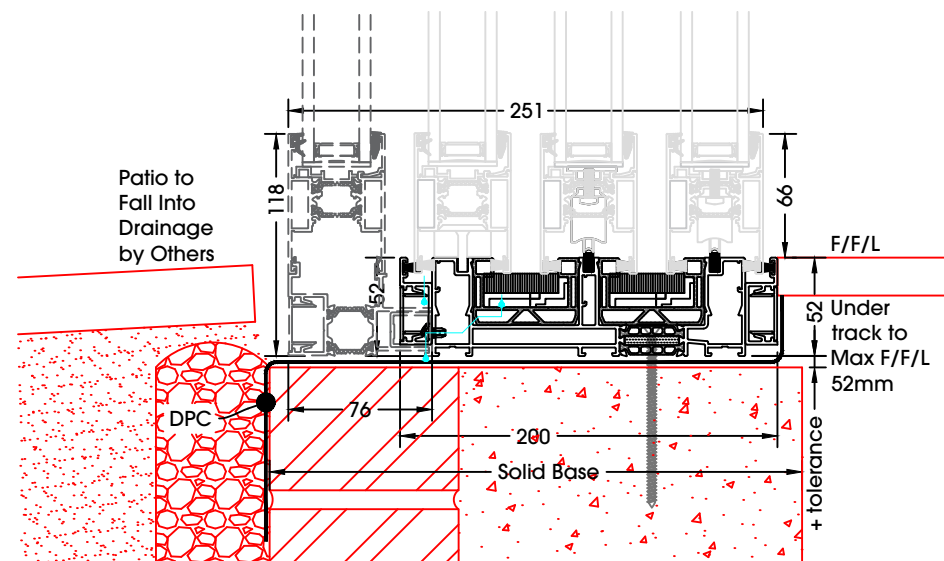
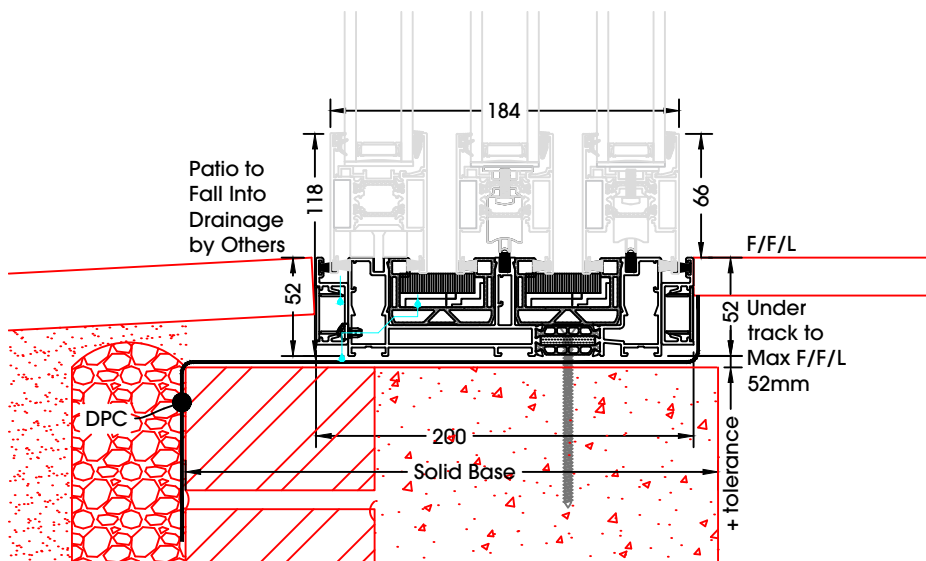


Triple track with flush detail all round inside

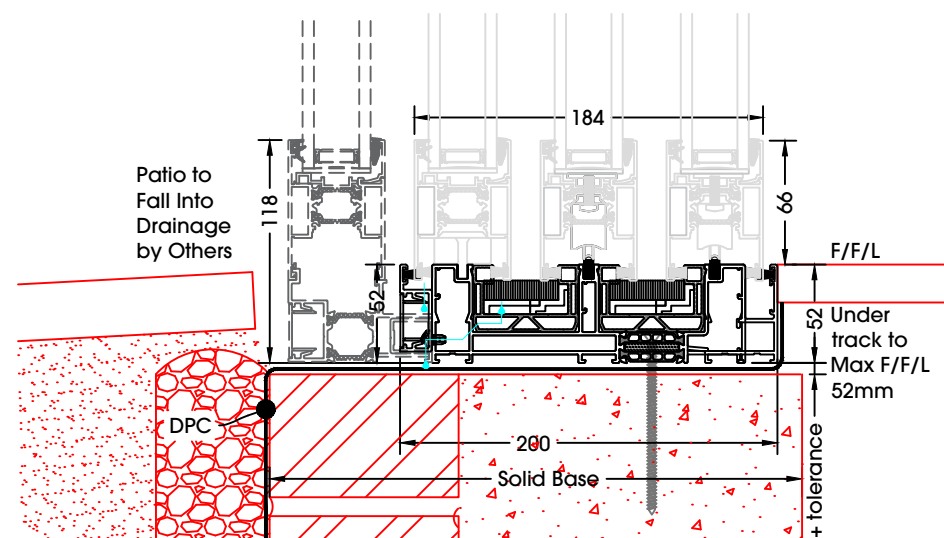
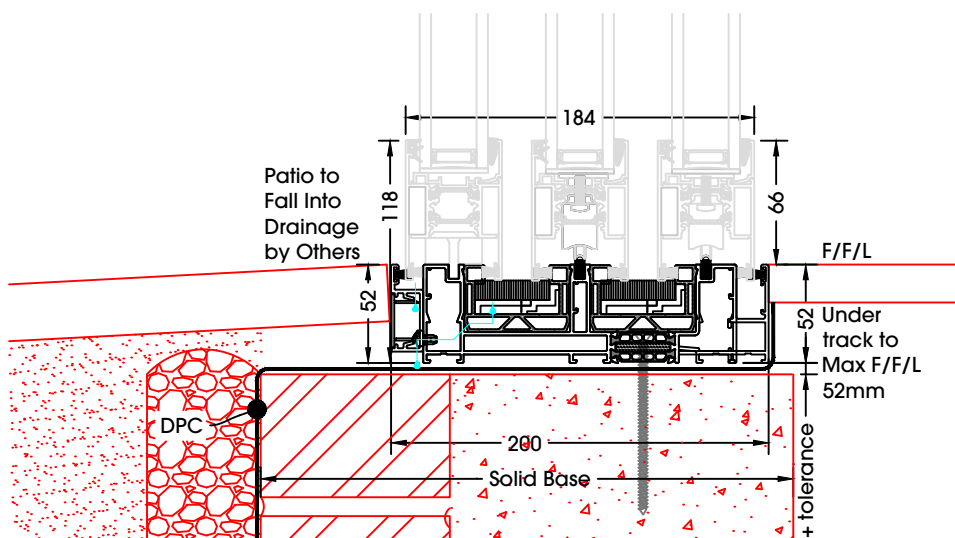


Triple track with flush detail all round inside and flush detail on outside

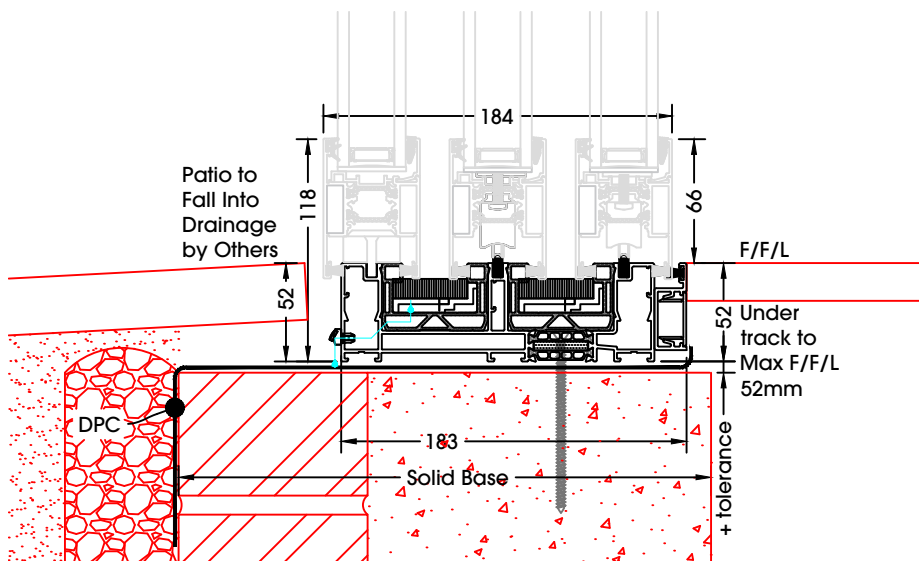




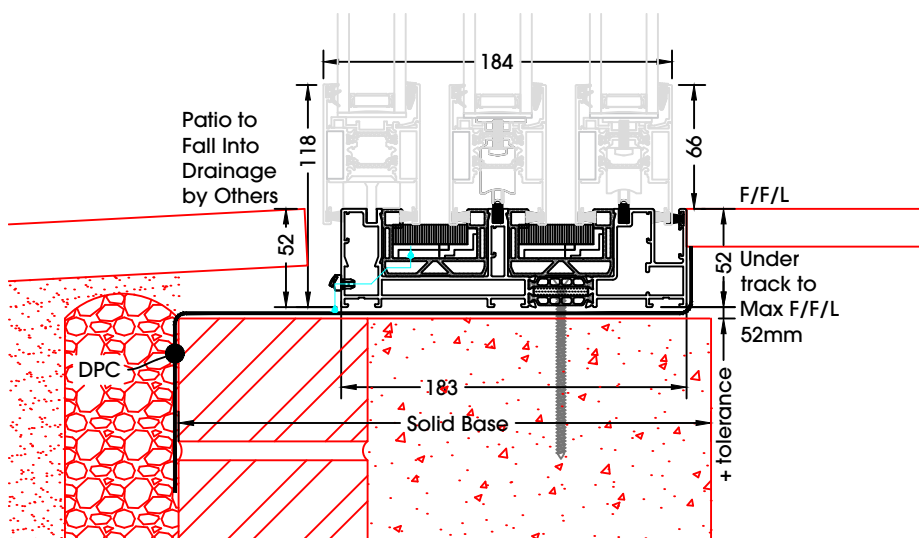
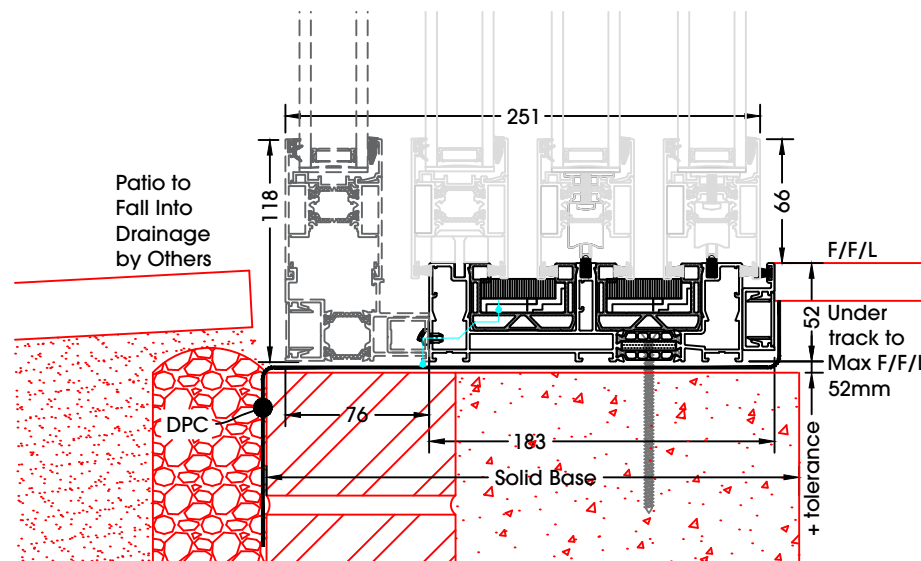
Triple track with flush floor detail inside and outside with plant on panel one end



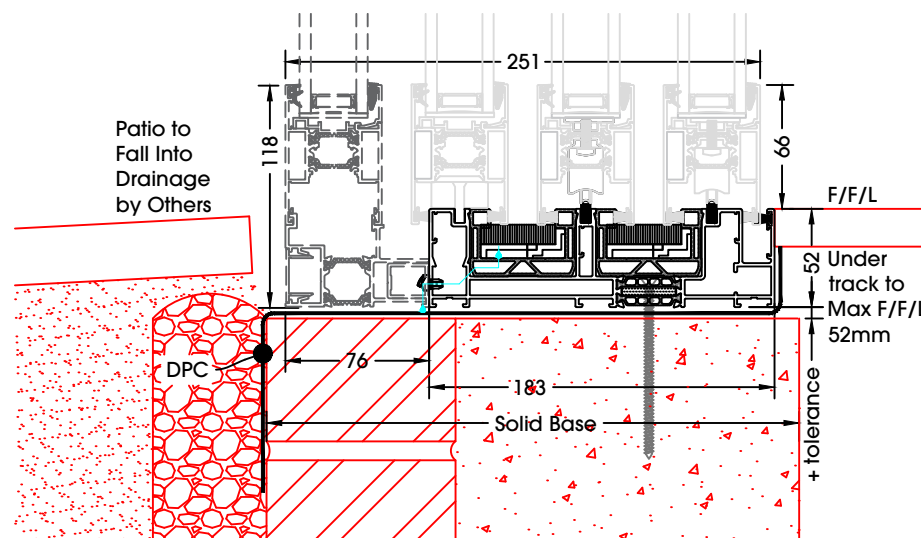
Triple track with flush detail all around and outside flush floor detail with plant on panel one end

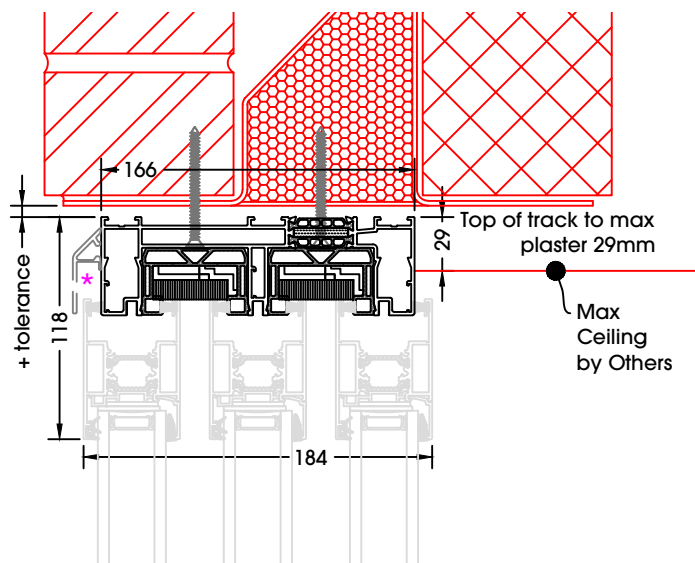


Triple track with flush floor detail inside
with plant on panel one end

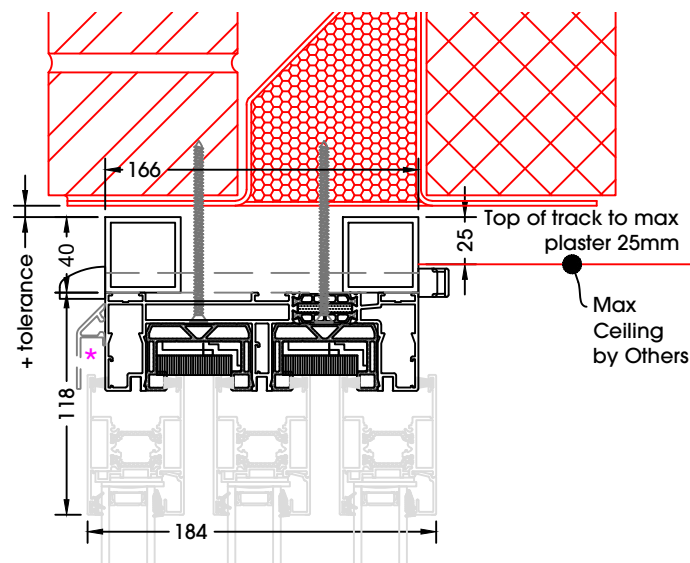


Triple track with flush detail all around with plant
on panel one end

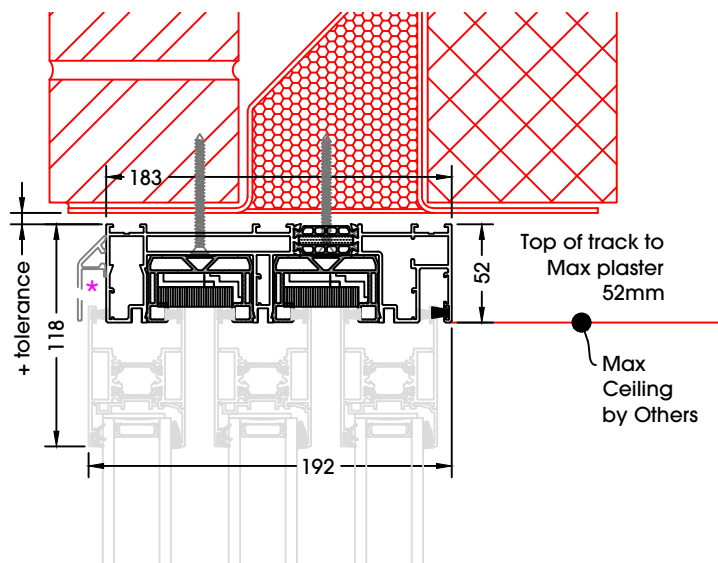




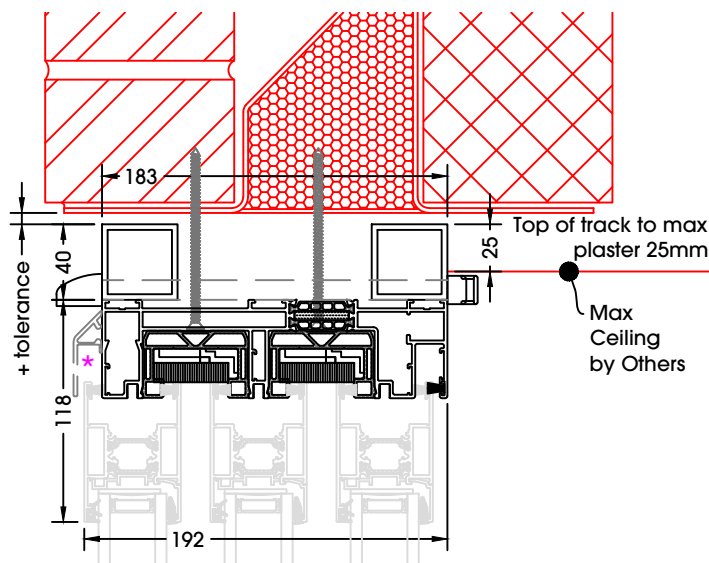
Triple head track



Triple head track with trickle vent



Triple head track with flush track all around

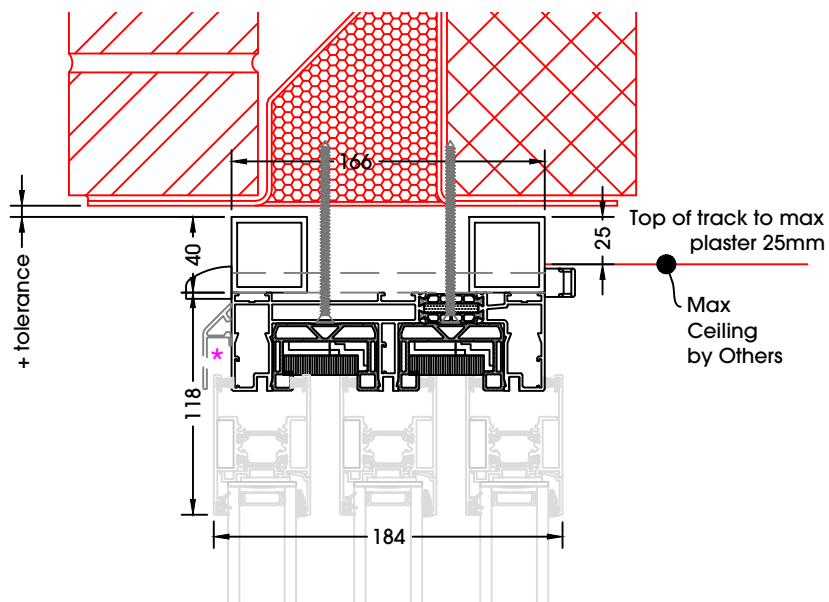


Triple head track with flush track all around with trickle vent

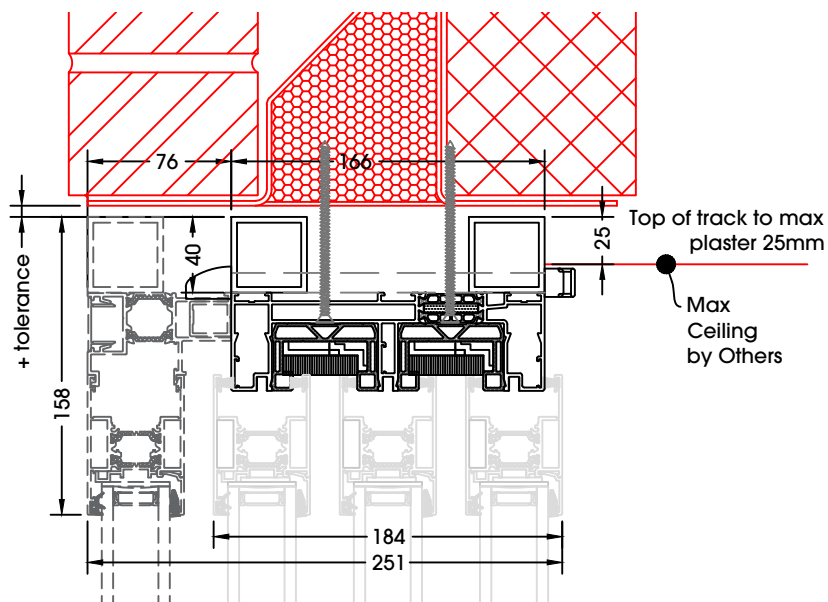
*

A colour matched drip profile is optional but recommended on the outside of the top track for any exposed locations or when any water will reach the top track.

If the doors are set back enough that water will not reach the top of the doors a drip profile is not required. With a fixed panel on the outer track this can be silicone sealed on site to make watertight rather than having a drip profile. With all panels sliding this would not be possible.

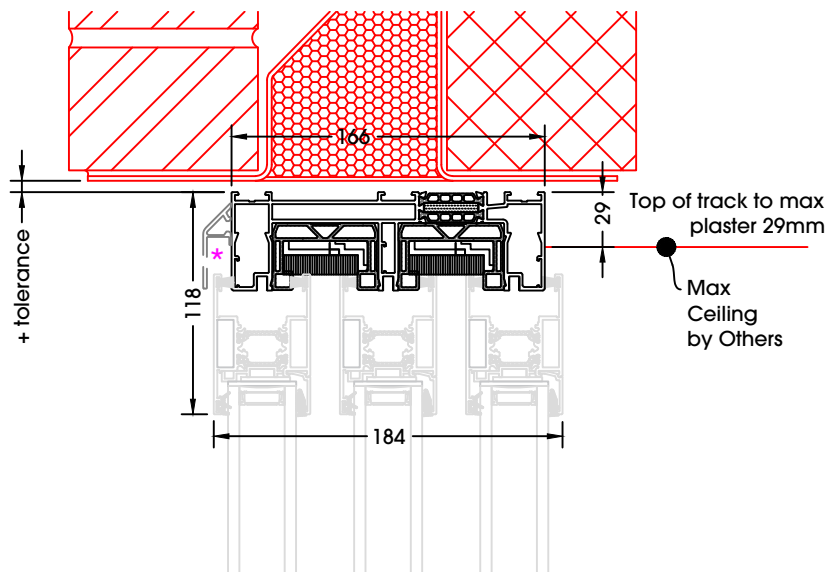


Triple head track with trickle vent and plant-on frame

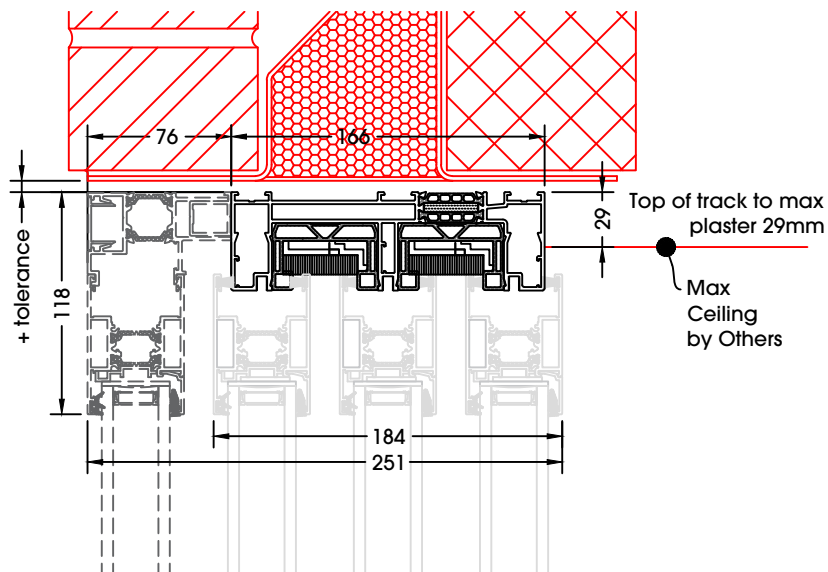


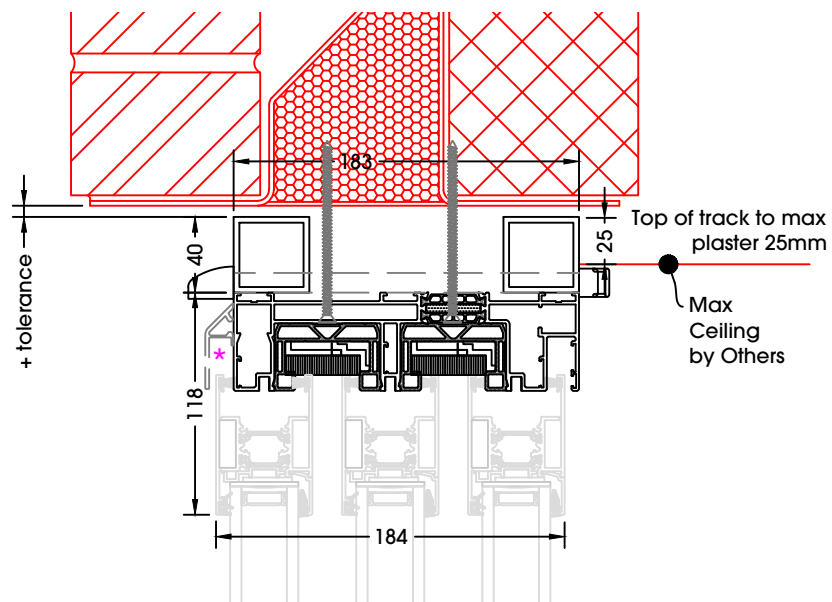
* A colour matched drip profile is optional but recommended on the outside of the top track for any exposed locations or when any water will reach the top track.

If the doors are set back enough that water will not reach the top of the doors a drip profile is not required. With a fixed panel on the outer track this can be silicone sealed on site to make watertight rather than having a drip profile. With all panels sliding this would not be possible.

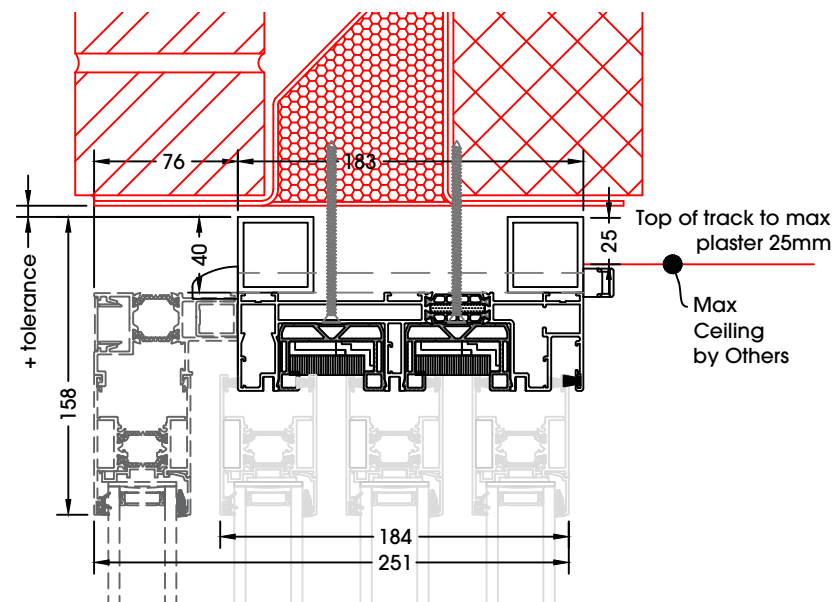


Triple head track with plant-on frame



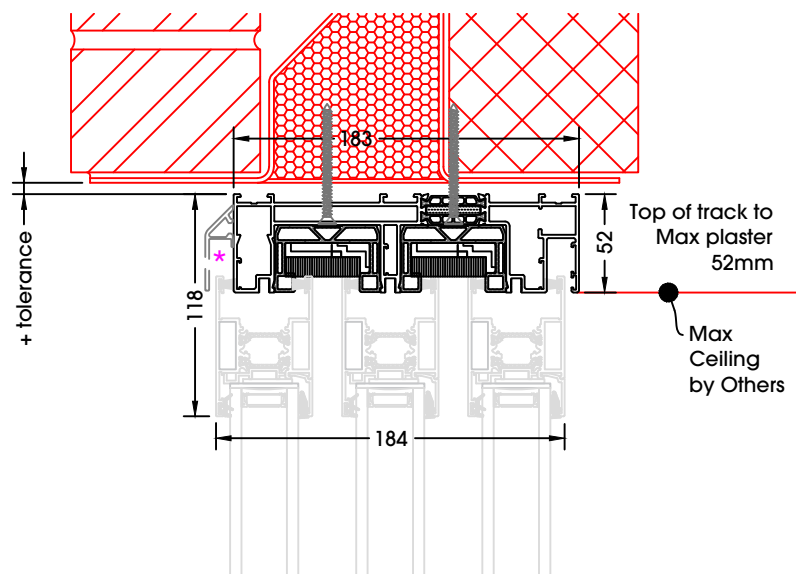


Triple head track with flush track all around with trickle vent and plant-on frame

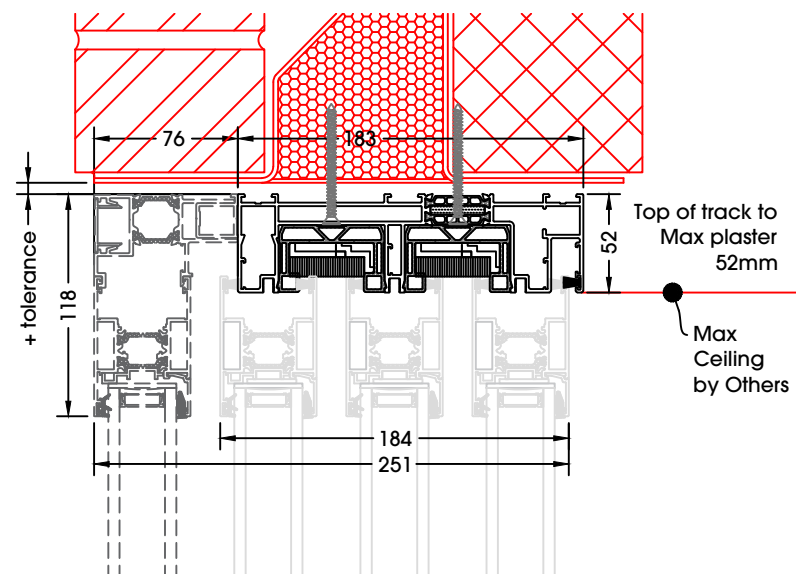


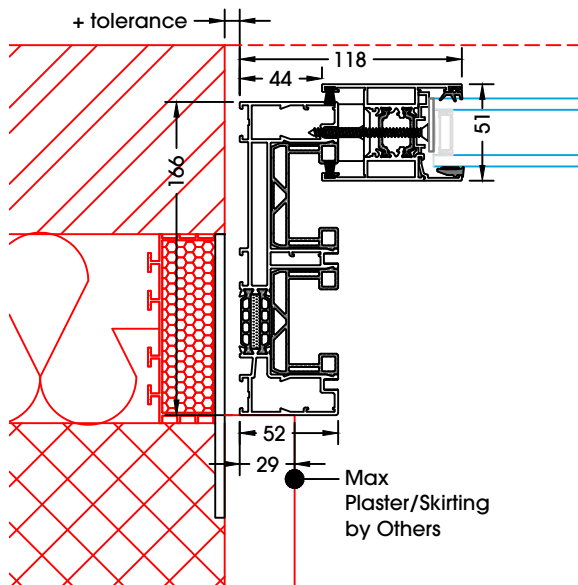
*
A colour matched drip profile is optional but recommended on the outside of the top track for any exposed locations or when any water will reach the top track.

If the doors are set back enough that water will not reach the top of the doors a drip profile is not required. With a fixed panel on the outer track this can be silicone sealed on site to make watertight rather than having a drip profile. With all panels sliding this would not be possible.

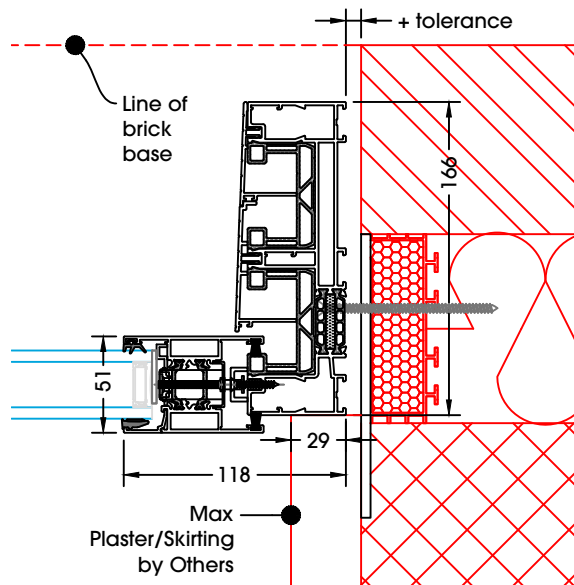


Triple head track with flush track all around with plant-on frame

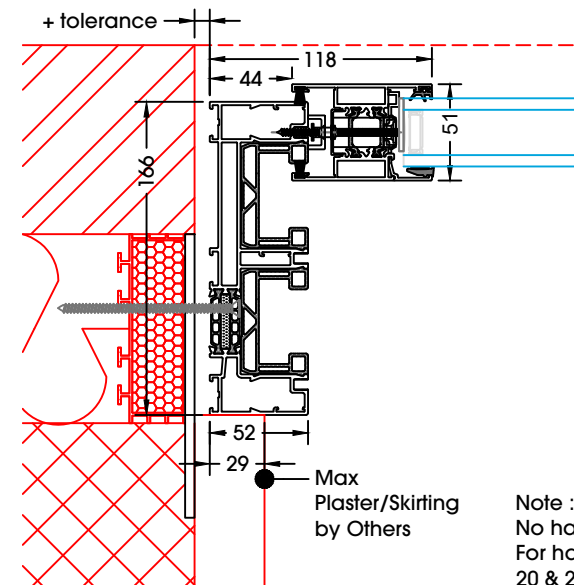




Jamb to wall detail with fixed door on outer track

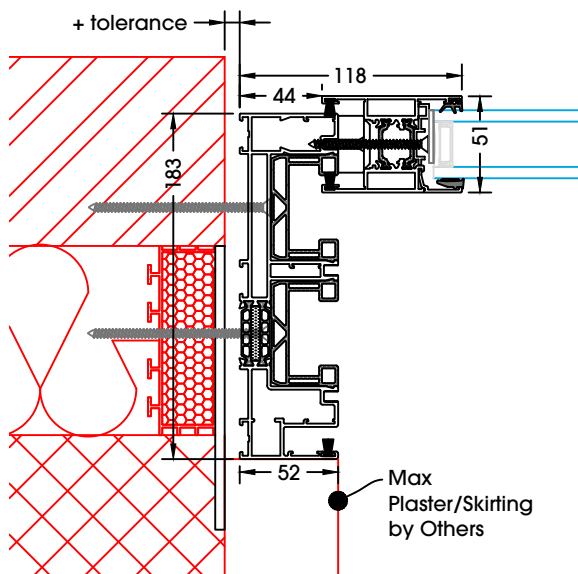


Jamb to wall detail with Sliding door on inner track

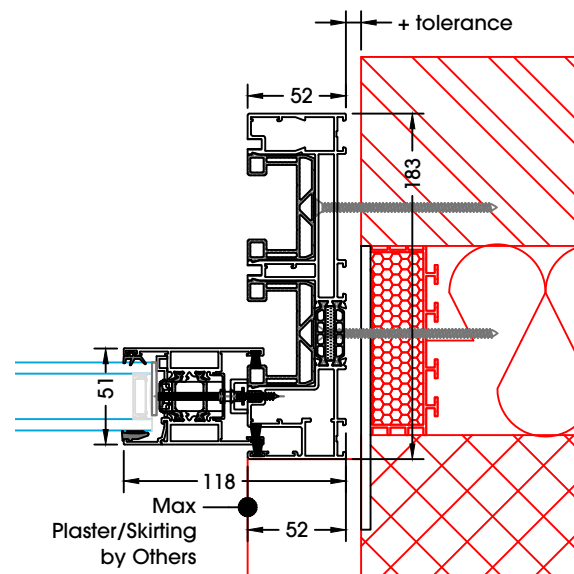


Jamb to wall detail with Sliding door on outer track

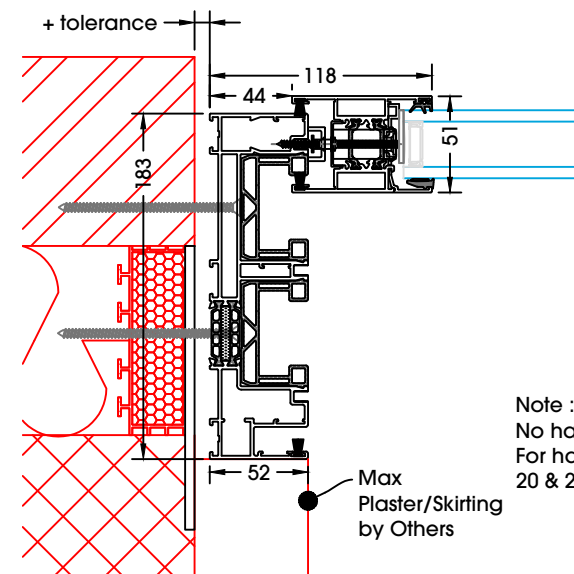
Note :-
No handles shown
For handles see sheets
20 & 21



Jamb to wall detail with fixed door on outer track with flush track all round

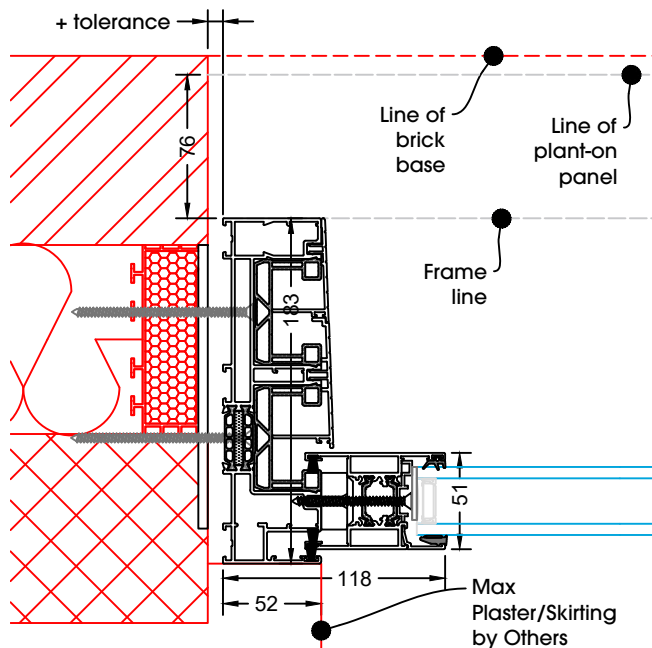


Jamb to wall detail with Sliding door on inner track with flush track all round

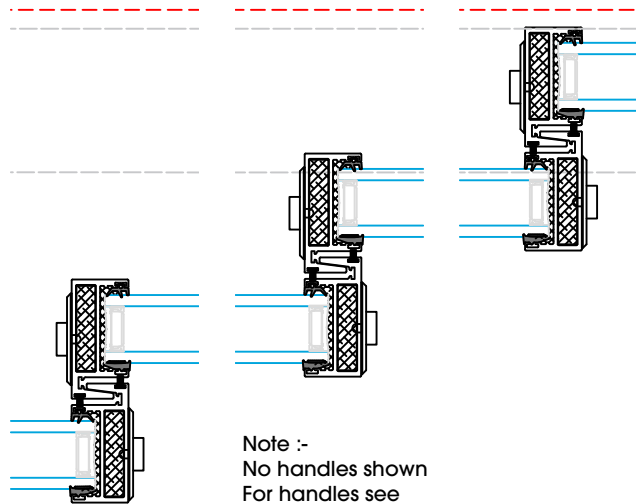


Jamb to wall detail with Sliding door on outer track with flush track all round

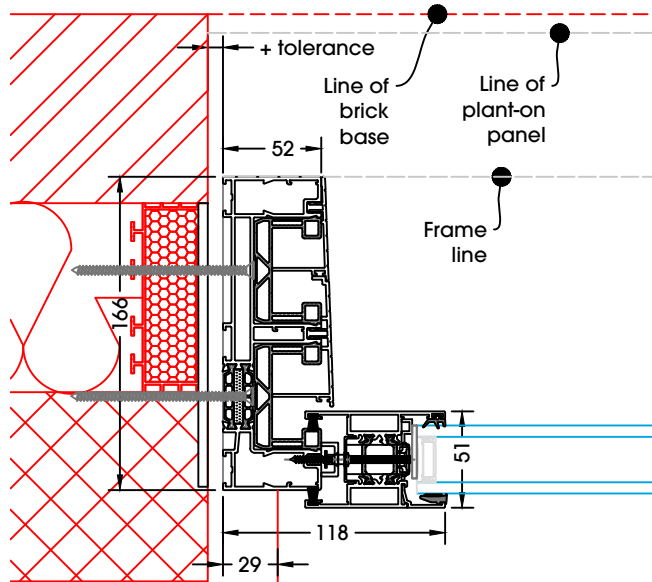
Note :-
No handles shown
For handles see sheets
20 & 21



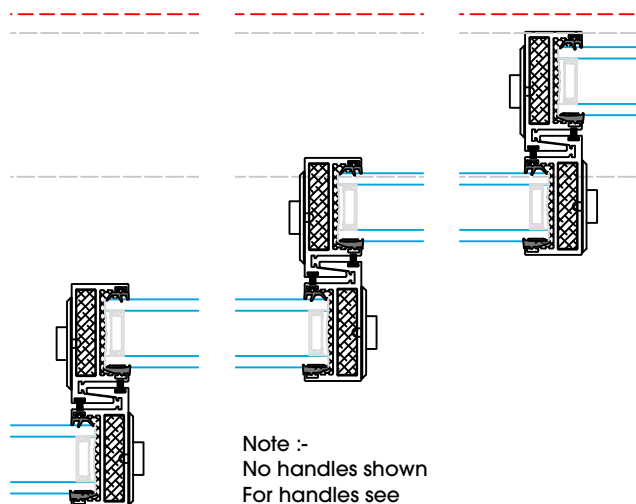
Jamb to wall detail with flush track detail all round with sliding door on inner track and plant-on to outside one end



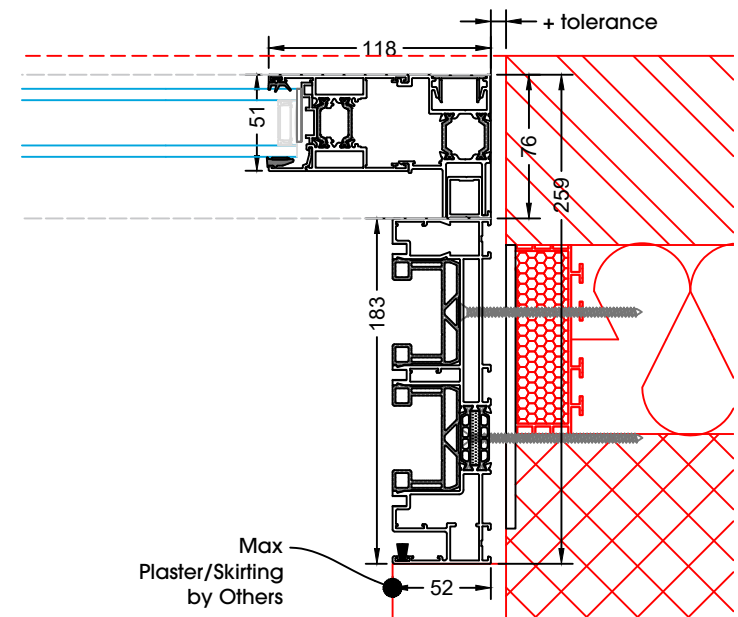
Note :-
No handles shown
For handles see
sheets 20 & 21



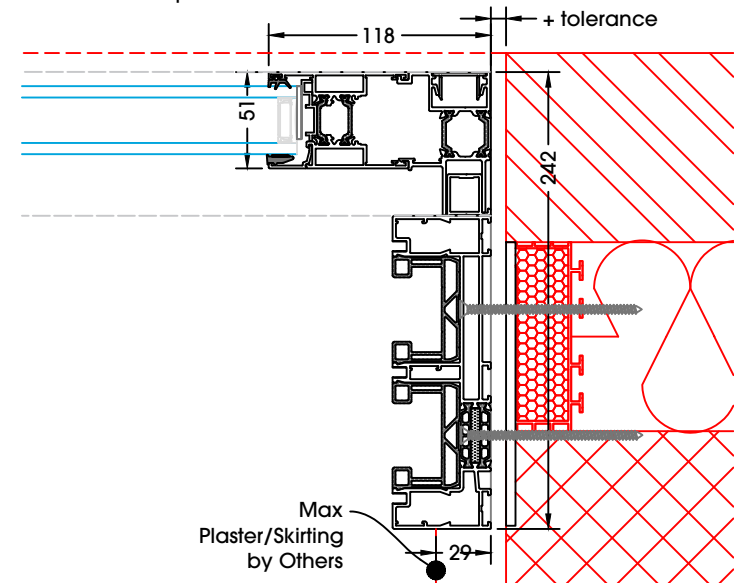
Jamb to wall detail with sliding door on inner track and plant-on to outside one end



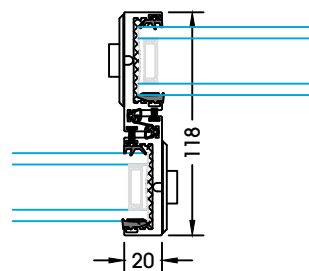
Note :-
No handles shown
For handles see
sheets 20 & 21



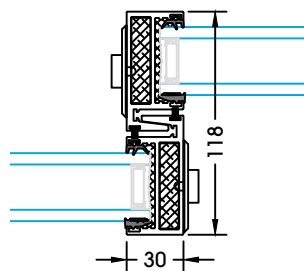
Jamb to wall detail with flush track all round and plant-on to outside one end



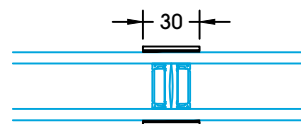
Jamb to wall detail with plant-on to outside one end



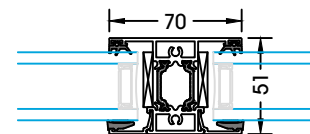
20mm mullion



30mm mullion

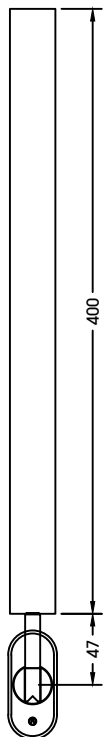


30mm plant-on
(To be trimmed and
applied on site)

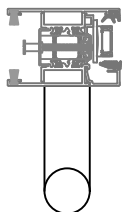
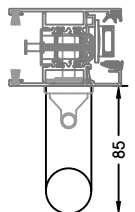
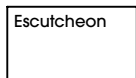
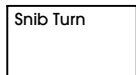


Midrail / transom
/ mullion detail

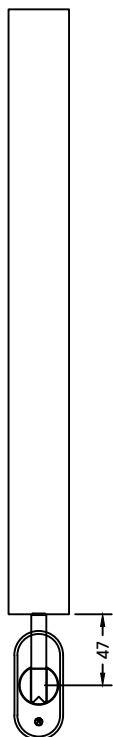
Straight Round
Handle
Main Panel



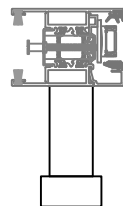
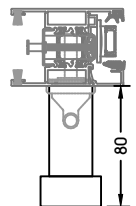
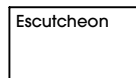
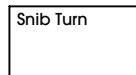
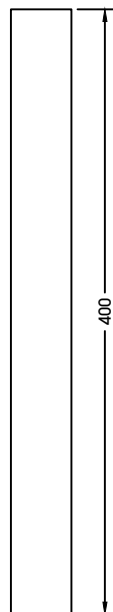
Straight Round
Handle
Secondary Panel



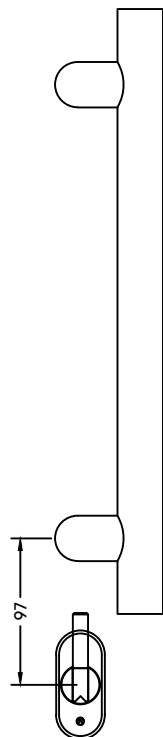
Straight Rectangle
Handle
Main Panel



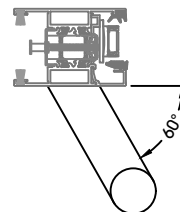
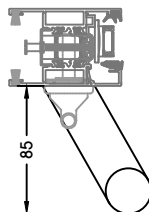
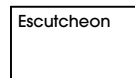
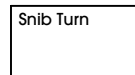
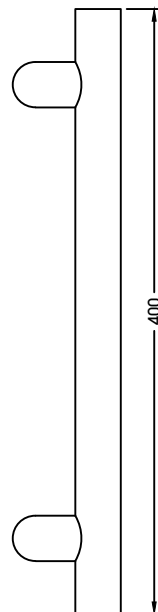
Straight Rectangle
Handle
Secondary Panel



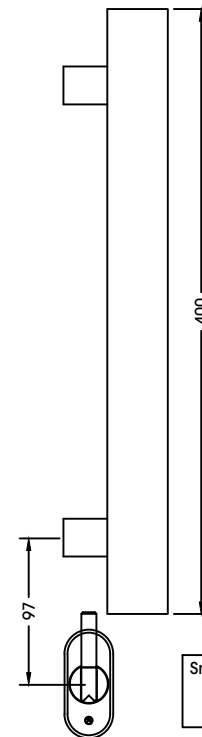
Cranked Round Handle
Main Panel



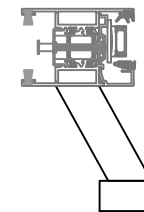
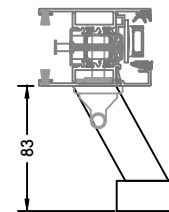
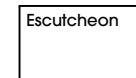
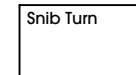
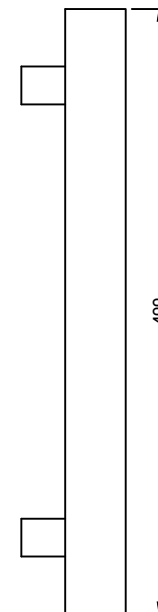
Cranked Round Handle
Secondary Panel



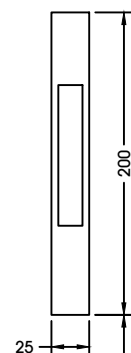
Cranked Rectangle Handle
Main Panel



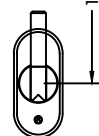
Cranked Rectangle Handle
Secondary Panel



Recessed flush handle
with lock below



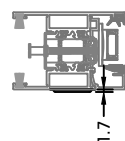
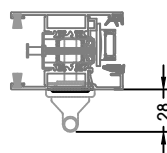
Recessed flush handle
no lock



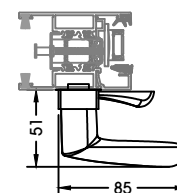
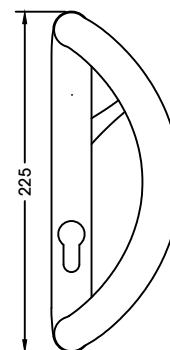
Snib Turn



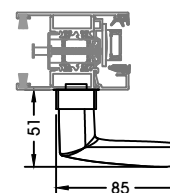
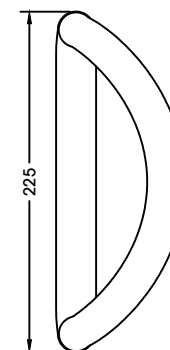
Escutcheon



'D' Shaped Handle
Main Panel



'D' Shaped Handle
Secondary Panel



Bifold doors

Sliding doors

Heritage doors

Aluminium windows

Glass roofs

Front doors

Internal glass partitions

Commercial doors

SUNFLEX UK 

sunflexUK.co.uk