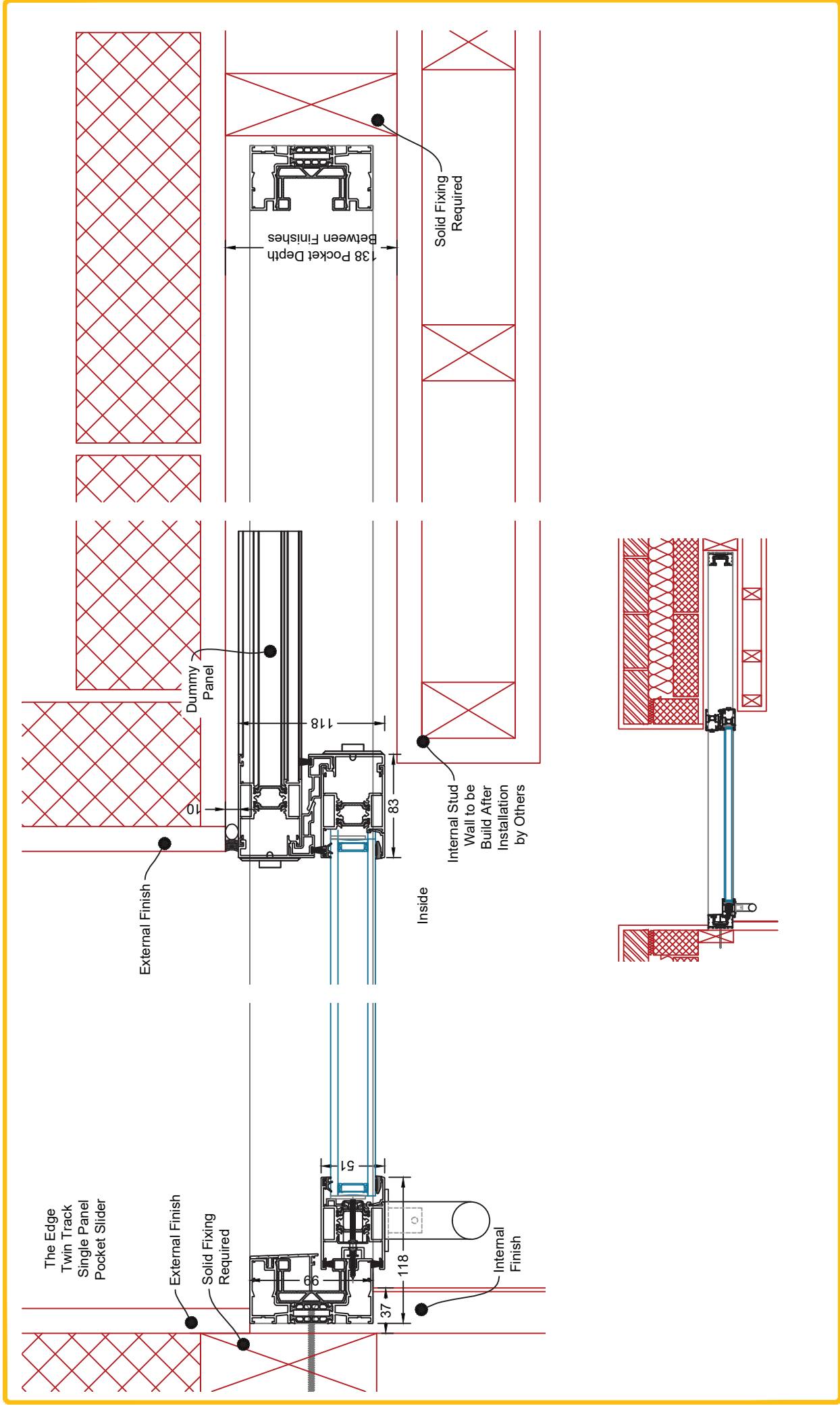
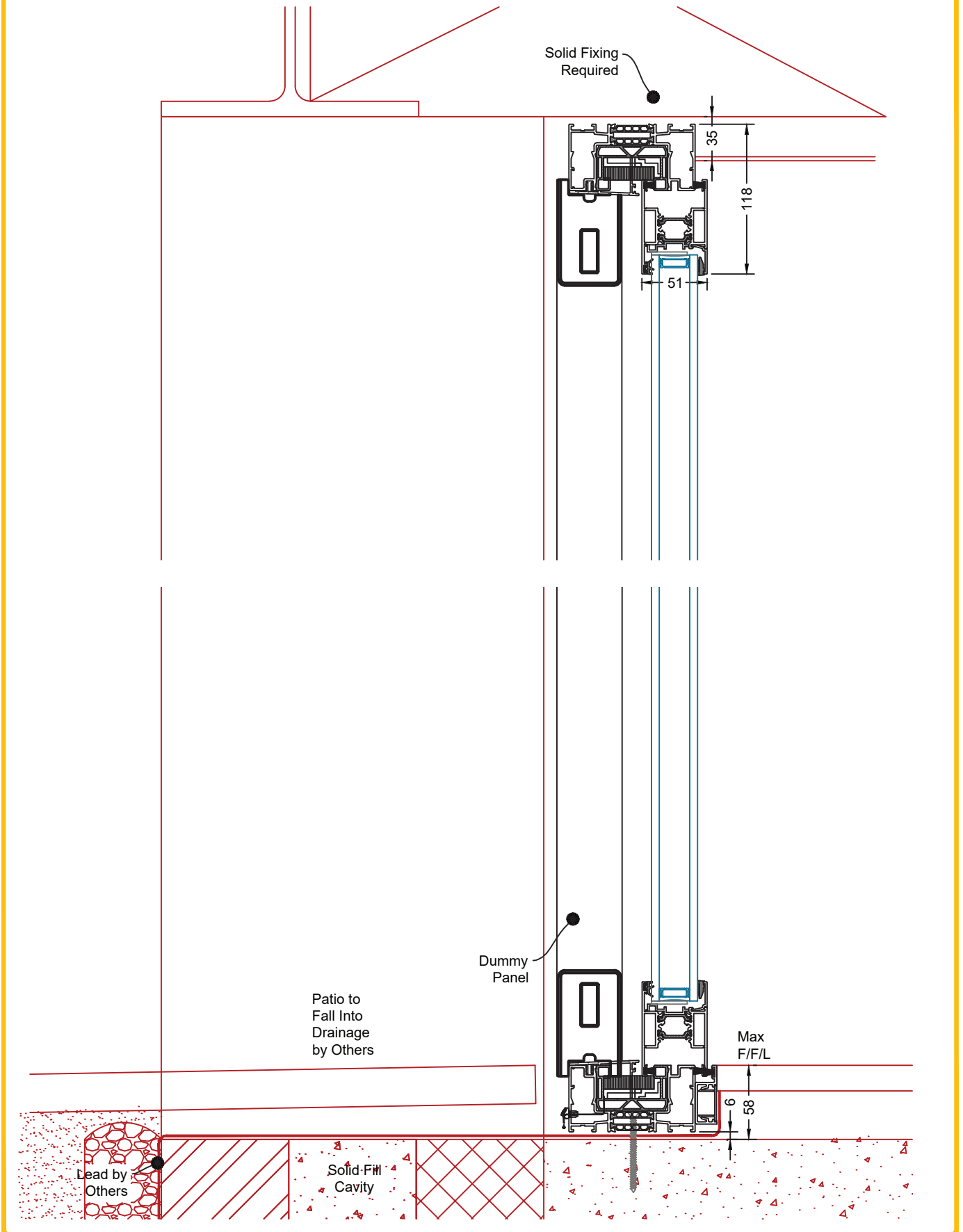
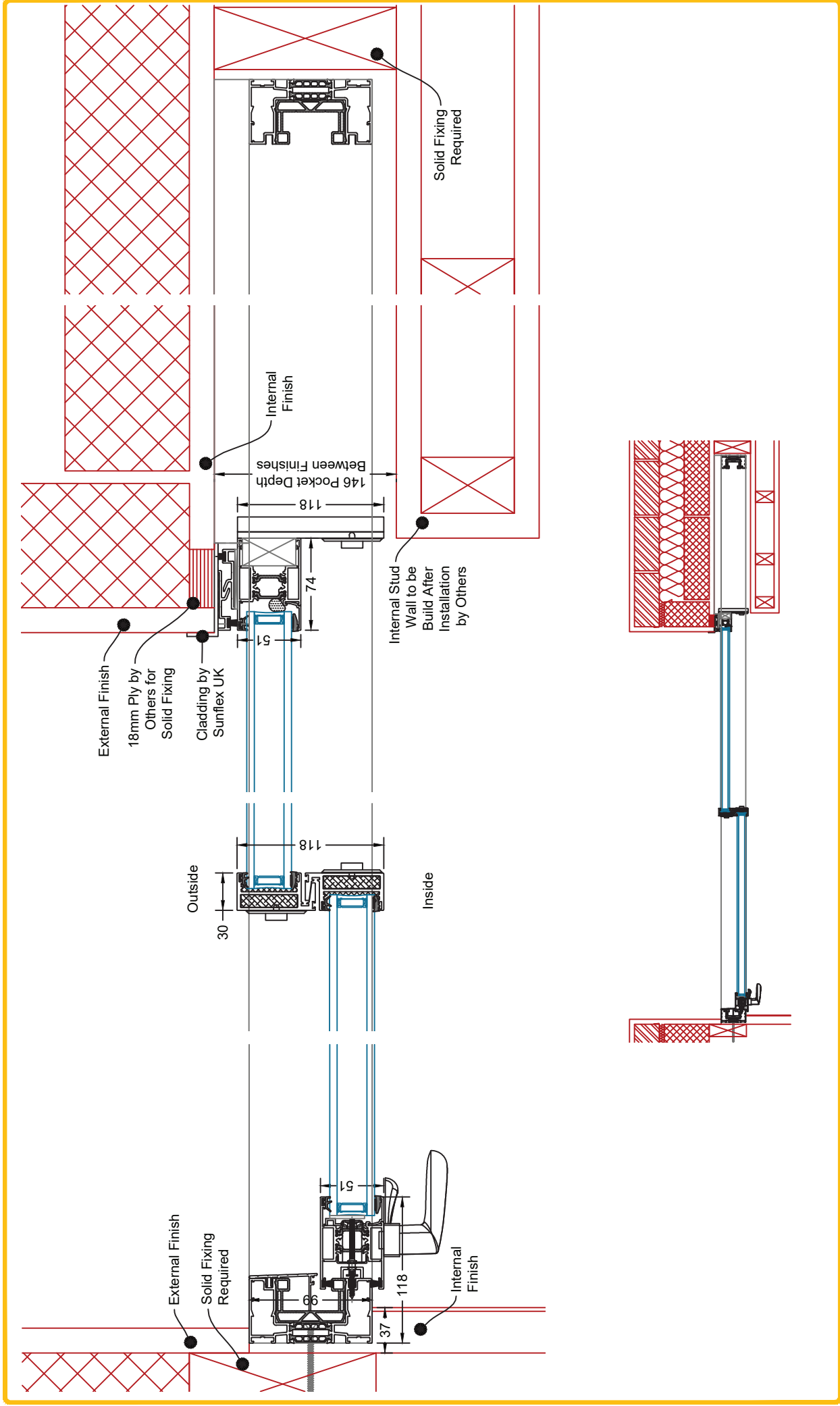


# SVG30/SVG83 (Twin Track)

## POCKET SLIDER TYPICAL SECTIONS



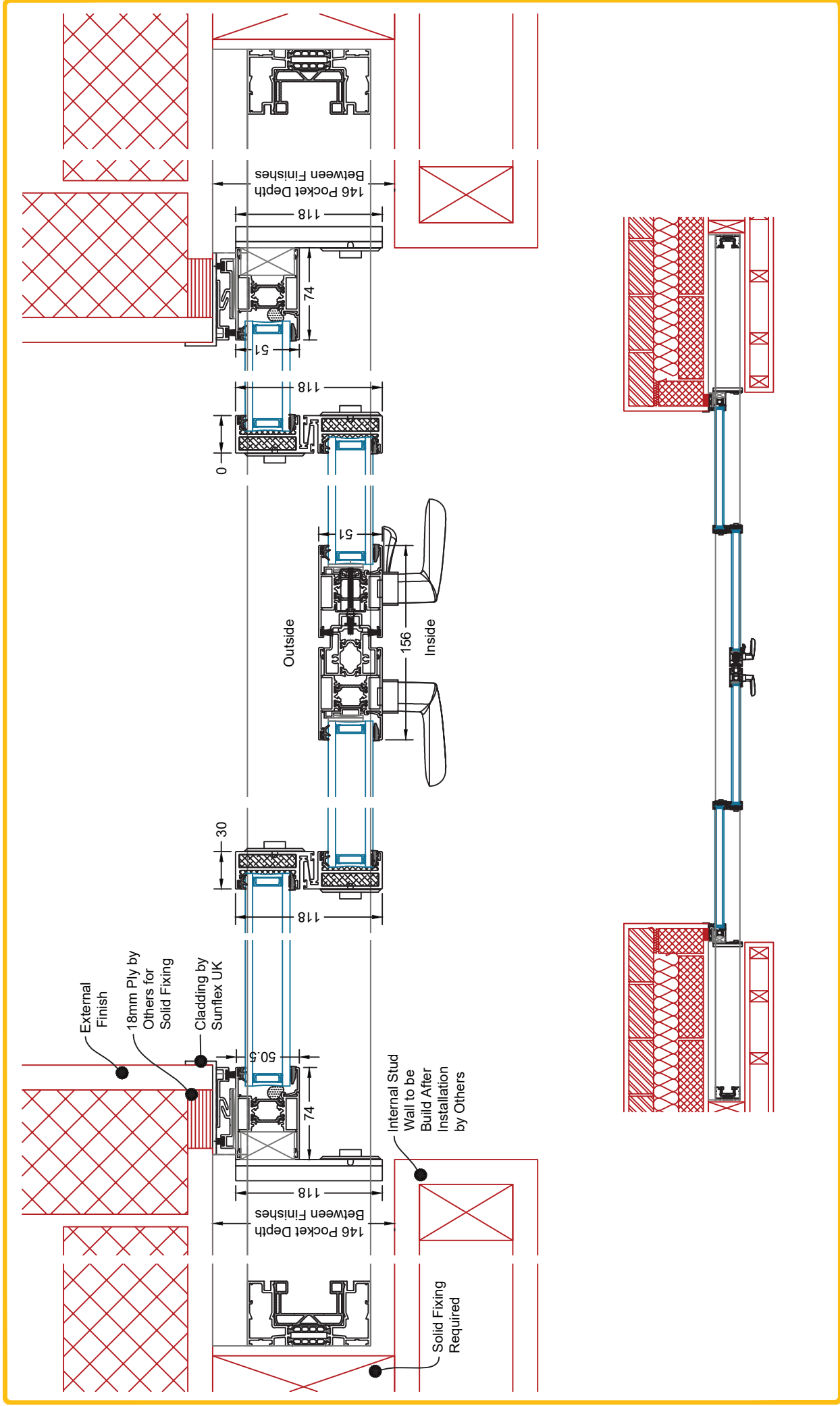




Description: SVG30/SVG83 Twin Track Two Panel Pocket Typical Detail

System: SVG30 & SVG83	Rev.
Page: C04	A





Description: SVG30/SVG83 Twin Track Four Panel Pocket Typical Detail

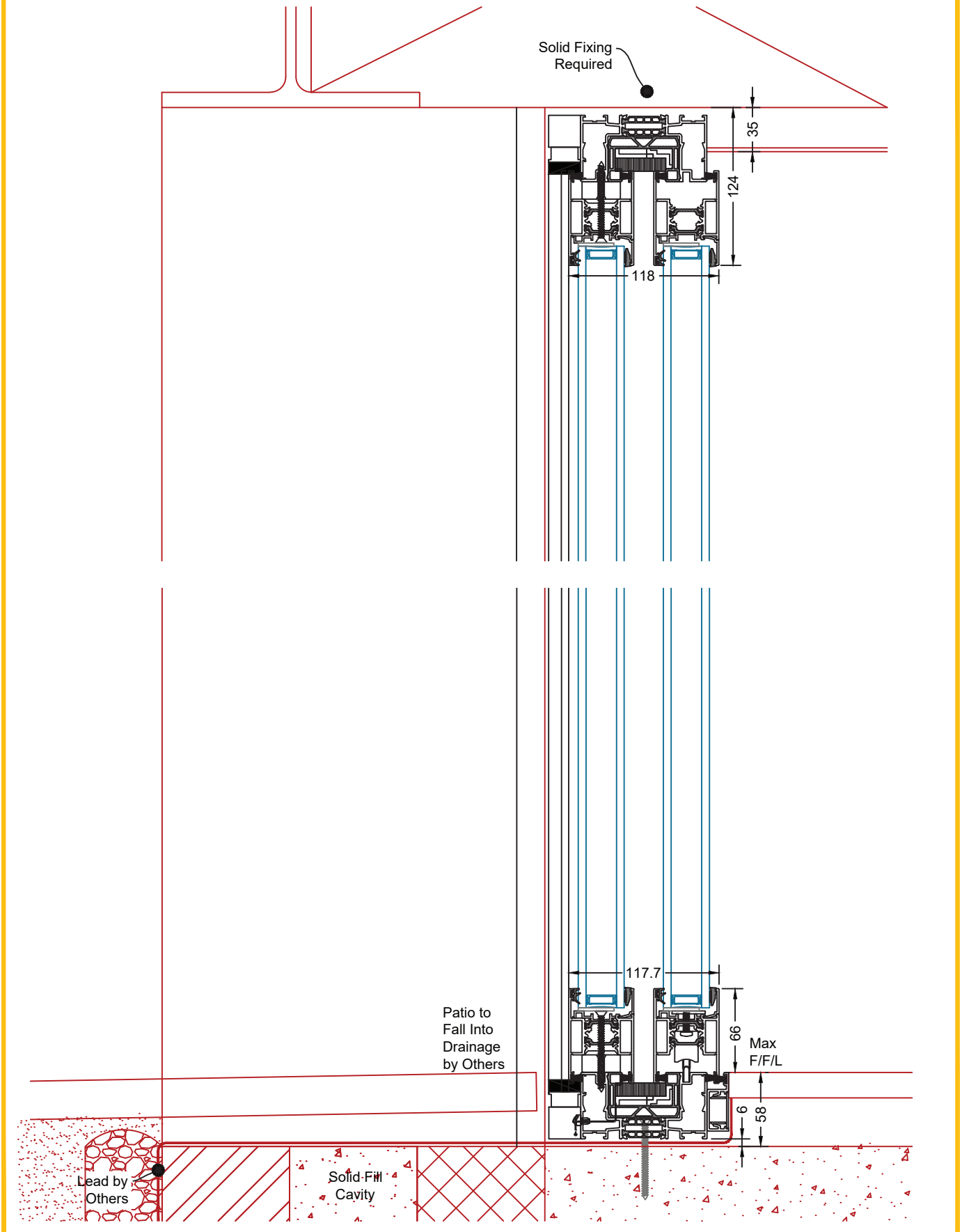
System: SVG30 & SVG83

Page: C05



Rev.

A



Description: SVG30/SVG83 Twin Track Pocket Typical Detail

System: SVG30 & SVG83

Rev.

Page: C06

A